



WINTERGARDENS





## CONTENTS

WINTERGARDENS BY SOLARLUX 04

THE BENEFITS OF CHOOSING A PREMIUM MANUFACTURER 06

THE DIVERSITY OF WINTERGARDENS 22

SDL Akzent plus  
SDL Akzent Vision  
SDL Nobiles  
SDL Avantgarde

VERTICAL GLASS ELEMENTS FOR WINTERGARDENS 34

FITTING OPTIONS FOR WINTERGARDENS 40

More comfort for your wintergarden  
The right orientation

SYSTEM SPECIFICATIONS - COMPARISON 46

THE TECHNOLOGY OF THE WINTERGARDEN 50

ABOUT SOLARLUX 60





# WINTERGARDENS BY SOLARLUX

*A new room with certified quality*

Adding a wintergarden to your home is the perfect way to give you more living space – and there’s no limit to what you can include in your plan. Whether integrated into the existing architecture, as a built-on extension to your existing living area or even an additional room in a restaurant, Solarlux wintergardens are the perfect way to make your wishes for more space come true. Optimum thermal insulation and a variety of designs are a given, just like the comprehensive range of accessories and different ventilation options we offer.

Solarlux has more than 35 years of experience in producing and developing wintergardens, glass houses and bi-folding doors. A wintergarden from the premium manufacturer not only offers more space – it also provides you with the assurance that you have chosen a provider to whom certified quality and compliance with the applicable regulations are of the utmost importance.





## A SAFE HAVEN - REAL EXPERTS YOU CAN *trust*

THE BENEFITS OF CHOOSING A PREMIUM MANUFACTURER



## THE RIGHT CHOICE IN EVERY RESPECT

*The perfect solution for any situation*

Accurate fitting solutions by Solarlux. Every extension roof with the selected glazed vertical units, such as bi-folding doors or sliding systems, will be the perfect match for your needs. Solarlux's bespoke solutions are also impressive in terms of their design: the canopies, shade features and vertical glass elements are conceived precisely to work in perfect harmony with one another, right down to the smallest detail. All Solarlux products come from a single source - thus guaranteeing full functionality for many years to come.





APPLICATIONS

Wintergarden cater to a wide range of applications - a “traditional” extension to your living space is just one of many possibilities. Our wide range of canopy designs - each of which is perfectly tailored to suit your individual project - is also suitable for use as an integrated roof system, a built-on extension, or to extend outdoor seating areas in the gastronomy industry.



01 Traditional living space extension Bochum, Germany 02 Integrated roof system Amstelveen, Netherlands 03 Gastronomy Scharbeutz, Germany





## WIDE RANGE OF CANOPY SHAPES

Whatever your stylistic tastes, Solarlux wintergardens offer the right shape of canopy for any situation. Each client can decide for themselves whether they want a harmoniously integrated extension to their living space or add a striking touch to their home with a built-on wintergarden. Our in-depth planning and consultation services allow us – together with the client – to determine the perfect shape and size to suit their ideas and wishes. Design, statics, drainage, shade and ventilation – these are the key factors that help us to design the perfect canopy and bring it to life.



### Examples of canopy shapes

Solarlux can design an amazing wintergardens solution for any building – from a traditional, built-on wintergardens to integrated glass architecture, over one floor or the full height of the house, covering the entire facade. The canopy shapes shown here are intended purely as examples. In reality, we can make almost any type of canopy you can think of, and always work to match it with the existing architectural and structural conditions of your home.





## TESTED SOLARLUX QUALITY MADE IN GERMANY

Test certificates from reputable national and international institutes guarantee the highest level of functional reliability, stability and durability for every Solarlux wintergarden. The fully tested statics offer peace of mind in extreme weather conditions, such as snowfall leading to snow drifts, high winds and even hurricanes. In addition to complying with the glass standard DIN 18008, it goes without saying that all our systems also bear the CE marking. This European seal of approval confirms that Solarlux offers compliance with DIN EN 1090, which has been mandatory for all manufacturers of steel and aluminium supporting structures since 2014. This system is used throughout Europe to demonstrate when a factory has been certified and carries out its own production control.

### **NOTE:**

DIN EN 1090 is extremely important. If this certification is not provided, your planning permission may be rejected.



## OUR MATERIALS

The high-quality aluminium and wood materials we use at Solarlux offer maximum creative freedom for your design – not to mention sustainability and durability. By combining these materials with our patented technology, we can make the Solarlux wintergarden the perfect designer solution for your construction projects.



### WOOD

*The natural material for a cosy environment*

The woods used by Solarlux are FSC and PEFC-certified and are sourced from sustainable forestry. Both our certificates in this area set high standards, particularly in terms of sustainability, the environmental compatibility of the forest cultivation, the quality of the work and the social expertise of the forestry companies we work with. Our use of water-based finishes and energy-saving production with recycling of water and heat provide further evidence of the care with which we handle our natural resources.

This means that when you choose wood as your material, you are opting for a natural raw material that will provide individual and cosy living. Solarlux fulfils this preference in every respect. In addition to spruce and pine, we also offer a wide range of other timbers, depending on the grain. Our surface treatments are completely individual too. Whether you opt for a varnish, a hand-oiled surface or an opaque lacquer, Solarlux products are available in any colour of your choice, regardless of the product manufacturer.



### ALUMINIUM

*The material for durability*

Durable and almost completely zero-maintenance – this is the promise that aluminium keeps as a material. We also apply environmental awareness to our aluminium production – Solarlux is certified in accordance with the German A.U.F. Recycling Loop, which has confirmed that our aluminium is recycled in an environmentally conscious manner that saves on resources. All of our aluminium wintergardens are available in any colour – including special colours such as Eloxal and DB.



# OUR COLOURS

When you choose a Solarlux wintergarden, you opt for individuality. Solarlux standard colour options, which include around 30 RAL colours, offer all the colours of the rainbow in matt and gloss finish s, at no extra cost. This allows every wintergarden to match its building's interior and exterior design. We use our own in-house clean-room coating process - one of the most modern in Europe - for top surface quality.

## THE SOLARLUX WORLD OF COLOURS

 RAL 1015	 RAL 3011	 RAL 5003	 RAL 5008
 RAL 5014	 RAL 6005	 RAL 6009	 RAL 7004
 RAL 7006	 RAL 7015	 RAL 7016	 RAL 7021
 RAL 7024	 RAL 7035	 RAL 7038	 RAL 7039
 RAL 7040	 RAL 8017	 RAL 8019	 RAL 8022
 RAL 8077	 RAL 9001	 RAL 9003	 RAL 9004
 RAL 9005	 RAL 9006	 RAL 9007	 RAL 9010
 RAL 9011	 RAL 9016		



THE SOLARLUX COATING IS CERTIFIED  
TO INTERNATIONAL STANDARDS

## SOLARLUX SPECIAL COLOURS

*Inimitable surfaces for unique projects*

It goes without saying that we also offer special DB, RAL and Eloxal colours, as well as special surface finish s (e.g. Tiger), for anyone looking to give their wintergarden a unique twist. We can make almost any wish come true - and we also offer coatings for special climate requirements (such as coastal properties).





## THE BENEFITS OF A WINTERGARDEN - AN OVERVIEW



### CLIMATE BUFFER ZONE

A highly efficient, thermally insulated wintergarden acts as the perfect link between the inside of your home and the natural world around it. It is especially effective in balancing out the temperatures as the seasons change, and saves up the sun's heat to keep your home warm. On top of this, the wide range of ventilation and shading options available will give you the perfect climate inside your wintergarden.



### BOOST THE VALUE OF YOUR PROPERTY

A wintergarden gives you more than just extra space – it is also a sure-fire way of increasing your property's value. For private and public construction projects alike, a Solarlux wintergarden is always a sound investment in the material value of an existing building.



### EXPERIENCE ALL FOUR SEASONS

Discover the first blossoms of spring, feel the warm sun on your back, and watch leaves and snow fall on the roof above your head: a wintergarden gives you a front row seat to watch the changing seasons.



### INDIVIDUAL PROJECT SOLUTIONS

Every wintergarden we make at our factory in Melle is unique – you'll never see the same one twice. This makes each Solarlux wintergarden a one-of-a-kind solution. Thanks to their different canopy shapes, colours and materials, you can always find a Solarlux wintergarden to match your existing architecture. In addition to their functionality, their high-quality design represents true added value.



### WHAT SOLARLUX OFFERS

- In-depth consultation and planning
- Free visualisation (e.g. virtual reality model)
- Wide range of shapes, materials and colours guarantees perfect harmony with the building's existing architecture
- Filigree profile variants
- Maximum transparency
- Silicone-free assembly
- Sophisticated technical construction in terms of drainage, sealing, statics and sub-structure
- Compliance with all applicable standards and specifications





# A LIVING SPACE WITH PLENTY OF *natural light*

THE DIVERSITY OF WINTERGARDENS





## INDIVIDUAL PROJECT SOLUTIONS

Every Solarlux wintergarden is a bespoke solution that is tailor-made to suit your individual needs. The wide range of systems we offer is perfect for building simple roof constructions, unusual designer roofing, or even complex custom solutions.

**WHATEVER YOU WANT:  
EVERY WINTERGARDEN  
IS MADE BY HAND  
ESPECIALLY FOR YOU**





# SDL AKZENT PLUS

ALUMINIUM

## *Slim sight lines, impressive design*

An elegant, well-insulated space flooded with light – this is a role the SDL Akzent plus wintergarden roof system plays to perfection. The filigree rafters give the roof a slimline look and maximise the amount of light allowed into the wintergarden. The external structural members make the roof of the wintergarden, add lightness to the ambience and allowing you to make the most of the room's height. Thanks to the sophisticated technology, it can be used to create even large roof constructions with no problem whatsoever.

### **SDL AKZENT PLUS**

- Roof pitches of 5° to 45° available
- Quick and easy assembly
- Low U-values thanks to profiles with optimised thermal insulation
- Complies with structural requirements for handling wind and snow loads
- Slender sight lines
- Wide range of combination options







## SDL AKZENT VISION

ALUMINIUM

### *Unusual design*

The extravagant design is one of the key features of the thermally insulated SDL Akzent Vision roof system. The built-in steel cables and stainless steel components are designed deliberately to allow you to see how force is transferred through the system, lending the SDL Akzent Vision a unique character. The holes in the bearing profile add a sense of lightness to the overall look, maximising the amount of light that comes into the wintergarden.

#### **SDL AKZENT VISION**

- Roof pitches of 5° to 45° available
- Internal structural members
- Designer rafters with special holes for an airy look
- Controlled roof system drainage
- Complies with the latest energy-saving regulations



# SDL NOBILES

ALUMINIUM

## *The perfect solution for flat roof areas*

With its filigree design, the SDL Nobiles will lend your home a sense of lightness. The minimalist rafter structure creates a flat roof area on the outside that blends in beautifully with the existing architecture. Slender rafter profiles make the entire roof system seem almost as if it's floating.

### SDL NOBILES

- Roof pitches of 5° to 45° available
- Internal structural members
- Filigree rafter profiles let in plenty of light
- Can be combined with a wide range of lighting systems





## SDL AVANTGARDE

WOOD/ALUMINIUM

### *A natural vibe with perfect weatherproofing*

The SDL Avantgarde will bring you closer to nature in two ways: The wood on the inside of the roof makes it a unique, natural product, lending the room a homely feel. The high-quality woods used in the design allow you to make the roof any shape you like. The furniture-quality wooden surfaces and the limitless choice of shapes, colours and functions give you maximum creative freedom for your design. The aluminium covers on the outside provide protection against the effects of weathering. The covers are available in any RAL colour, of course, thus ensuring that the roof system matches the exterior design of your building perfectly.

#### **SDL AVANTGARDE**

- Interior: real wood
- Exterior: rear-ventilated aluminium covers
- Roof pitches of 5° to 45° available
- Triple glazing combination options
- Wide range of canopy shapes available







PERFECT VENTILATION;  
AN UNOBSTRUCTED  
VIEW *of paradise*

VERTICAL GLASS ELEMENTS FOR WINTERGARDENS





## FLEXIBLE OPENING OPTIONS

### *Bi-folding doors and sliding windows*

Whichever roof system you choose, you can combine your roof construction with a variety of vertical glass elements. This will allow you to enjoy wide openings to the outdoors and a large cross-section that facilitates a fast interchange of air for perfect ventilation.

We offer a comprehensive range of vertical elements, that can be used to install Solarlux bi-folding doors and sliding systems under almost any roof system, giving you a Solarlux wintergarden that is transparent on all sides, doesn't take away any daylight and can be opened up entirely whenever you wish for that open-air feel. In addition to this, the many different ways a bi-folding door can be opened give you full control over the temperature in your room. But even when closed, the elements never obscure your view of the outdoors.



The wide openings of the wintergarden provide an unobstructed view of the outdoors, good control over room temperature and perfect ventilation for your new living space





#### WOOD, ALUMINIUM AND WOOD / ALUMINIUM BI-FOLDING DOORS

Inwards or outwards, folding to the left and/or to the right – Solarlux bi-folding doors offer countless opening system possibilities. The individual glass elements can be opened or closed in just a few simple steps, across their entire length. The perfect touch: building an accessible floor track in accordance with DIN 18040 into your wintergarden will create a seamless transition to the architecture of your house. Tilt-and-turn panels and window elements can help you enjoy even more creative freedom. Thanks to the range of different materials, colours and design options we offer, your bi-folding door will blend in harmoniously with the overall look of your wintergarden.



#### THE CERO SLIDING WINDOW

The cero sliding window opens up rooms to give them an impressive new dimension. Cero offers every possibility required for architecturally demanding buildings from a constructive and creative point of view. Its slender frames and profiles help to make the elements as transparent as possible. The sight lines are kept to just 34 mm, resulting in a minimalist design that is underlined by the 98 % glass composition.

Of course, fixed glazing, traditional swing-panel and lift-and-slide doors can also be used in the cero system, as can parallel-sliding-tilt elements.







*Maximum convenience*  
**FOR YOU, EVERYTHING  
INCLUDED**

FITTING OPTIONS FOR WINTERGARDENS



# MORE COMFORT FOR YOUR WINTERGARDEN

*Accessories, heating and ventilation for your new living space*



**HEATING**

There are a range of heating options available so you can continue to enjoy your wintergarden during the colder months. Fireplaces and tiled stoves are especially effective, as is underfloor heating. But even normal radiators and underfloor convectors can be integrated into a wintergarden without any problem.



**AIR CONDITIONING**

The effective thermal insulation, clever ventilation concept and high-quality shading systems help to ensure a pleasant climate in your wintergarden, even on sunny days. In areas that are exposed or subject to extreme heat, however, it might be advisable to install an additional air conditioning system. This can be set to a specific temperature so that it automatically comes on when needed to regulate the climate in your extension.



**LIGHTING**

As soon as the sun goes down, well-placed light sources can keep things bright and cosy in your extension. Spotlight rails with built-in, low-voltage lamps can be mounted under the individual rafters for a subtle yet effective solution. Both fixed and swivelling LED spotlights are available.



**AUTOMATION**

The intelligently harmonised technical fittings of your wintergarden provide a foundation that will enable you to enjoy it all year round. You can operate all the components by hand if you wish but the automatic control options offer maximum convenience, with a special wintergarden control system that allows you to regulate the ventilation, shading and lighting in one place.



**VENTILATION**

In order to maintain the perfect climate at all times, Solarlux wintergardens can be fitted with a wide range of ventilation variants that can be combined in many different ways. The flexible opening options of the bi-folding door provide plenty of fresh air, while adjustable ventilators at the bottom of the windows and bi-folding doors help keep your wintergarden oxygenated whatever the weather. Both traditional rooflights and sliding or tilting windows can be integrated into the roof area for additional ventilation. Weatherproof roll ventilators enhance the effects of the ventilation system. All your electrically motorised opening elements can be controlled automatically in response to the temperature, humidity, wind, sunlight and rain conditions.



#### SHADE

Even with the best insulation, a winter-garden can get very warm on hot days. This can be remedied using our high-quality shading systems. Awnings provide effective shade on the outside of your wintergarden, catching the sun's rays before they hit the glass to keep things nice and cool inside. Inside shading options such as blinds, pleated blinds, Venetian blinds and film blind also keep your wintergarden from getting too warm, especially in summer. They also have the added advantage of being a flexible way of keeping prying eyes from looking in. You can also combine wind and temperature sensors with a wintergarden control system to regulate the shade automatically, thus keeping the climate in your wintergarden pleasant even when you're not at home.



#### HIGH-QUALITY ACCESSORIES FOR THE PERFECT CLIMATE

## THE RIGHT ORIENTATION

*Every point of the compass has something to offer*

#### North-facing

North-facing wintergardens will be filled with even, glare-free light all day long – perfect for offices and studios. The indirect sunlight also provides a great climate for many plants.

#### East-facing

East-facing wintergardens are especially enjoyable at breakfast time, when they are flooded with pleasant light. The shade from the house itself will offer great protection from the afternoon sun, and even plants that need to be kept away from direct sunlight will love these spaces.

#### South-facing

A south-facing wintergarden will allow you to enjoy the outdoors later into the year. This is the option that provides the longest hours of sunlight, storing up pleasant warmth from autumn through to spring – though you'll need to make sure you have effective ventilation and shading options for the summer.

#### West-facing

A west-facing wintergarden will give you warmth from the afternoon and evening sun – the perfect end to your day. Beautiful sunsets will provide the perfect backdrop for those cosy evenings.











GREAT DIVERSITY  
REQUIRES *clarity*

SYSTEM SPECIFICATIONS - COMPARISON

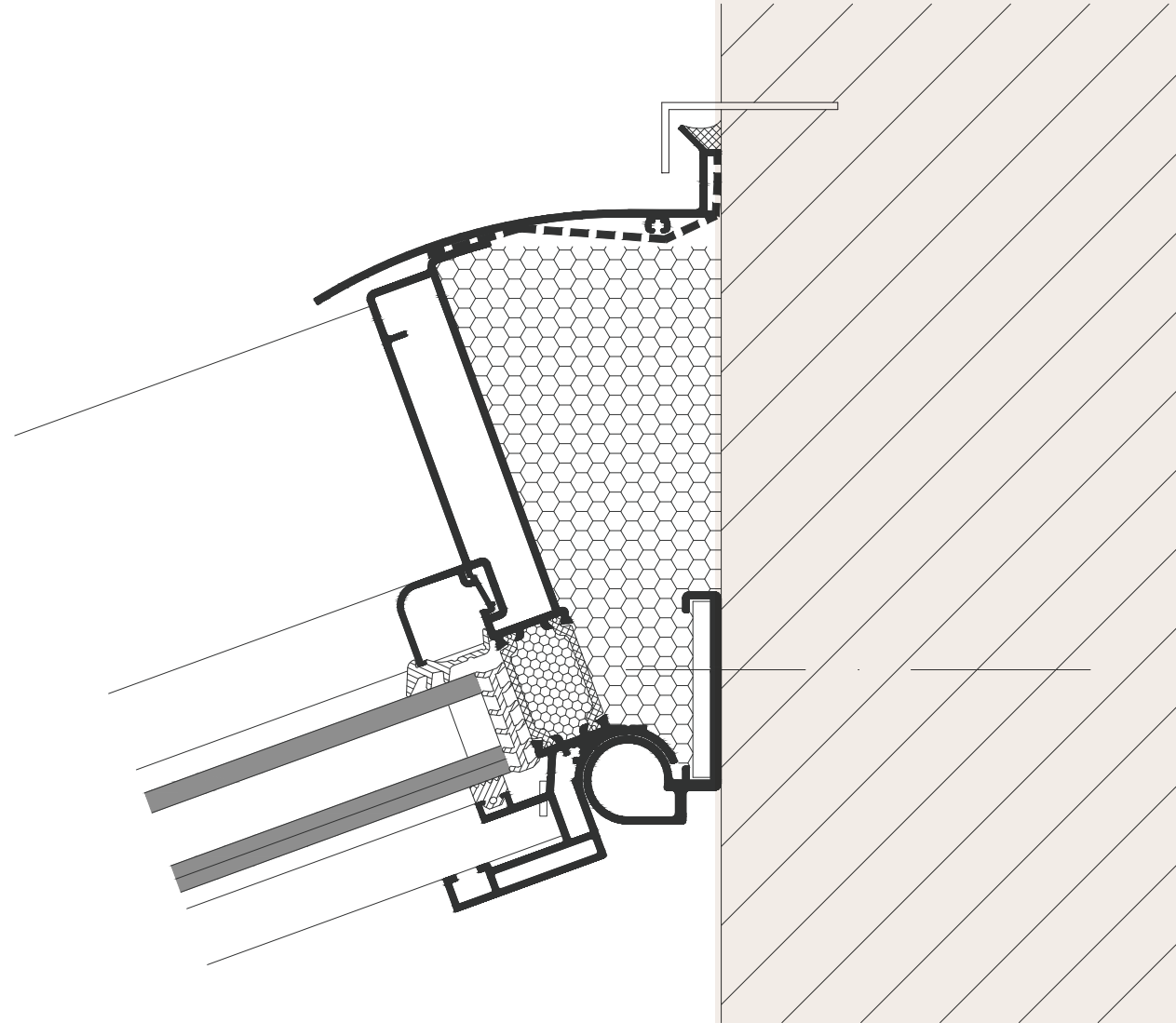


## OVERVIEW OF THE SYSTEMS

Below is an overview of all our systems and options so that you can compare them at a quick glance.

	SDL Akzent plus	SDL Akzent Vision	SDL Nobiles	SDL Avantgarde
				
<b>Roof construction material</b>				
Aluminium	●	●	●	○
Wood/Aluminium	○	○	○	●
<b>Material for bi-folding doors, parallel-sliding-tilt doors, windows and doors</b>				
Aluminium	●	●	●	●
Wood	○	○	○	●
Wood/Aluminium	●	●	●	●
<b>Canopy shapes</b>				
Monopitch and pitched roof	●	●	●	●
Customised designs	●	○	●	●
Roof pitch	5 - 45°	5 - 45°	5 - 45°	5 - 45°
Dimensions	Subject to techn. clarifi ation	Subject to techn. clarifi ation	Subject to techn. clarifi ation	Subject to techn. clarifi ation
<b>Colours</b>				
Aluminium coatings in RAL, DB, Duraxal	●	●	●	●
Solarlux wood colours	○	○	○	●
<b>Designer guttering</b>	●	●	●	●
<b>Downpipe / downpipe cladding</b>	●	●	●	●
<b>Glazing</b>				
Heat-retaining glazing	●	●	●	●
Anti-sun glass	●	●	●	●
Self-cleaning glass	●	●	●	●
Sound insulation glazing	●	●	●	●
Glass thickness	28 - 44 mm	28 - 44 mm	28 - 44 mm	26 - 48 mm
<b>Shading</b>				
Internal and external awning / vertical	●	●	●	●
<b>Ventilation</b>				
Motorised sliding rooflig ts	●	●	●	●
Motorised or manual roof hatches	●	●	●	●
Motorised roof ventilation	●	●	●	●
Motorised or manual tilting windows	●	●	●	●
<b>Insect screen</b>	●	●	●	●
<b>Lighting</b>				
Spotlight rail with built-in LED lamps	●	○	○	●
Custom lighting systems	Subject to techn. clarifi ation	Subject to techn. clarifi ation	Subject to techn. clarifi ation	Subject to techn. clarifi ation
<b>Glass extension control system for automation (shading, rooflig t, ventilation, heating)</b>	●	●	●	●





# THE TECHNOLOGY OF THE WINTERGARDENS

**SDL AKZENT PLUS**

Wall joint  
Rafters  
Eaves

**SDL AKZENT VISION**

Wall joint  
Rafters  
Eaves

**SDL NOBILES**

Wall joint  
Rafters  
Eaves

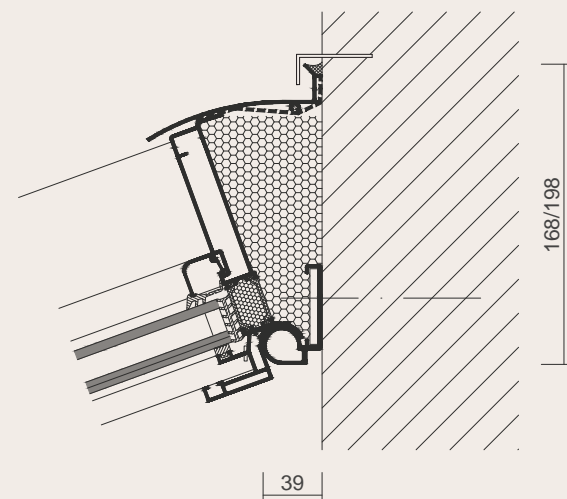
**SDL AVANTGARDE**

Wall joint  
Rafters  
Eaves



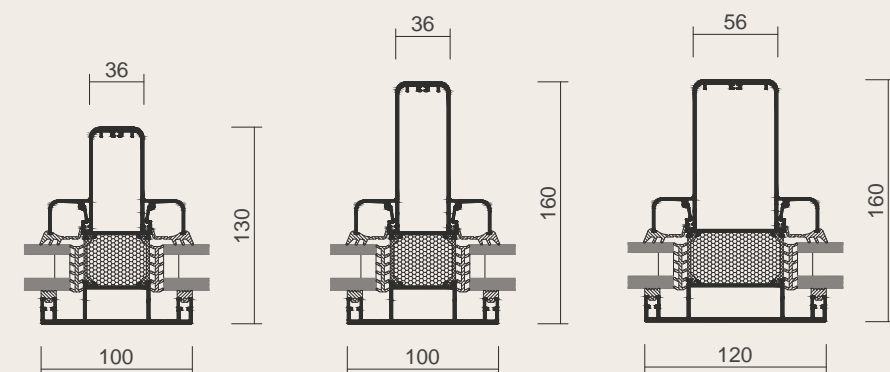
# SDL AKZENT PLUS

## Detail sections



### Wall joint

Multi-section wall joint allows roof pitches from 5° to 45°.

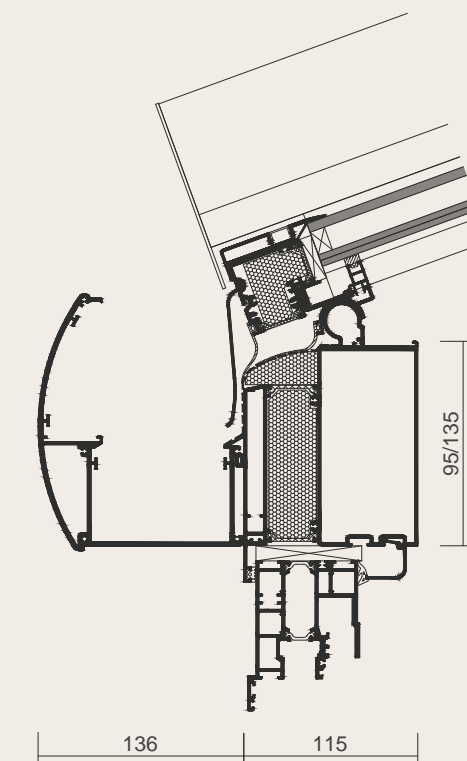


### Rafters

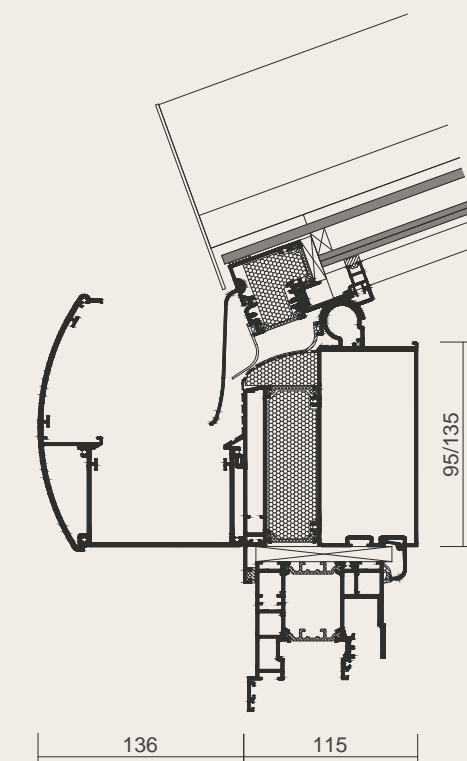
Three rafter types with steel reinforcement where necessary depending on structural requirements; with optional spotlight rail.

## Highly heat-insulated eaves

Multi-section eaves with rounded Softline profile on the outside. Available in two sizes and with steel reinforcement depending on structural requirements. Compatible with vertical glass elements with different overall depths. Elegant interior support structure with glass moulding.



Version with pressure glazing

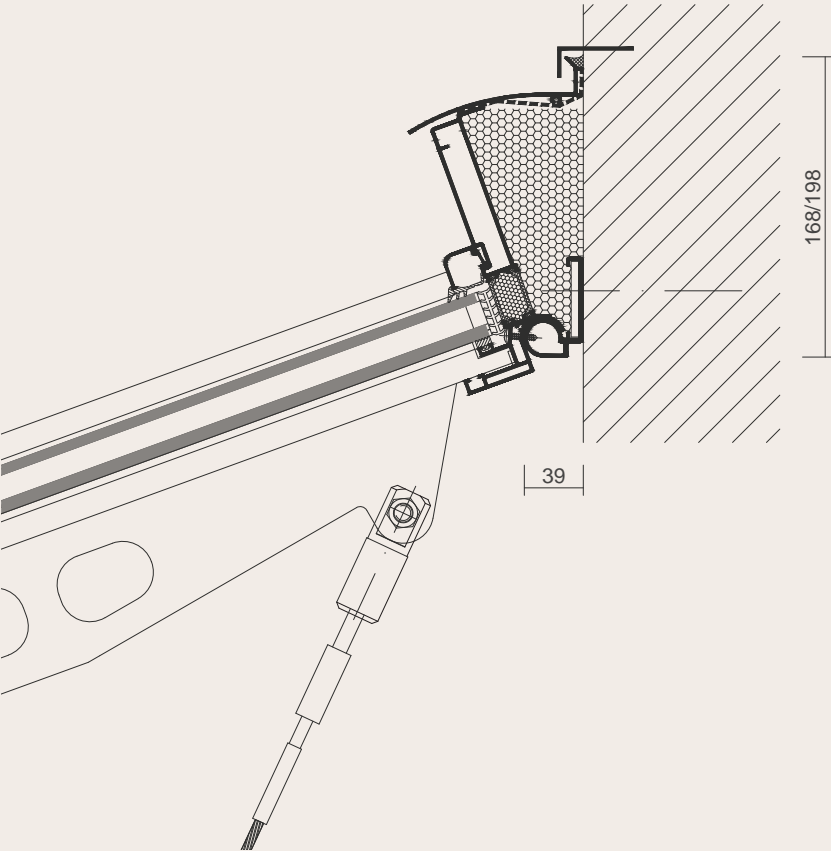


Version with stepped-edged glazing



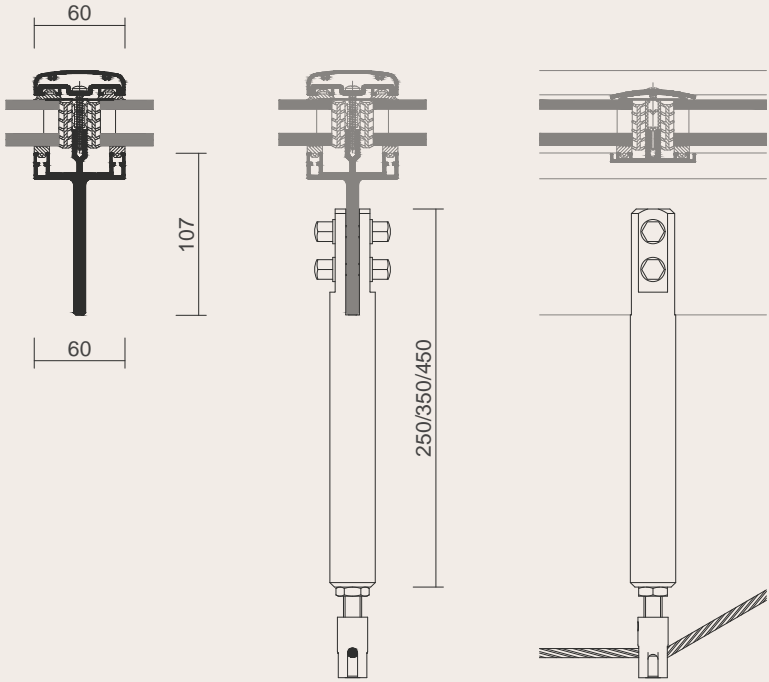
# SDL AKZENT VISION

## Detail sections



Wall joint

Multi-section wall joint allows roof pitches from 5° to 45°.

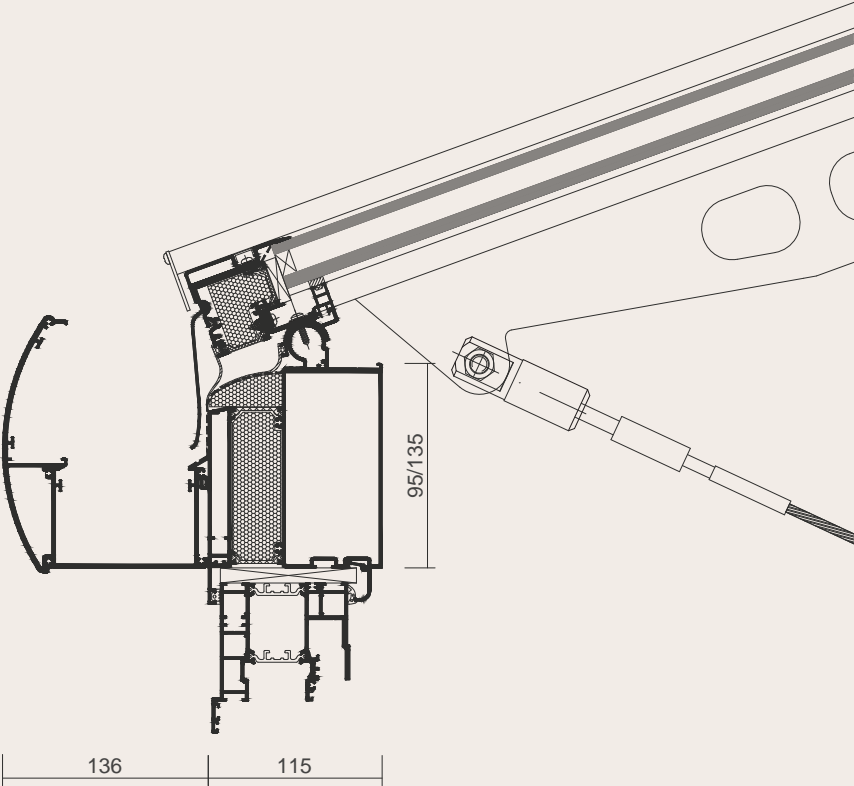


Rafters incl. compression strut

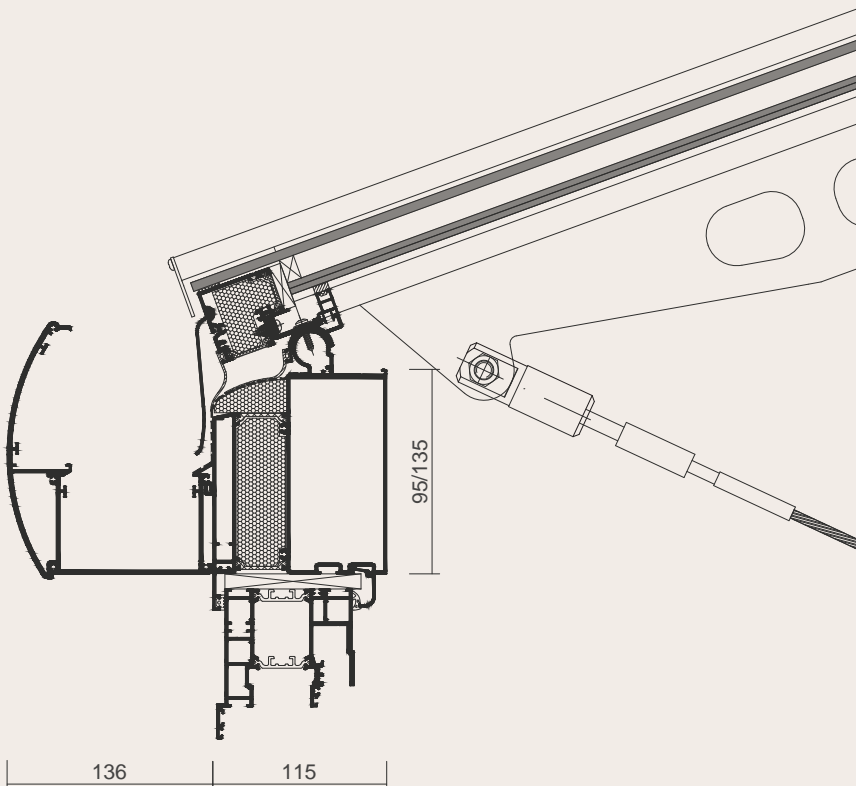
Ultra-slim rafters in modern design, with holes and stainless steel guying cables. Three lengths of compression strut are available to suit different spans.

## Highly heat-insulated eaves

Multi-section eaves with rounded Softline profile on the outside. Available in two sizes and with steel reinforcement depending on structural requirements. Compatible with vertical glass elements with different overall depths. Elegant interior support structure with glass moulding.



Version with pressure glazing

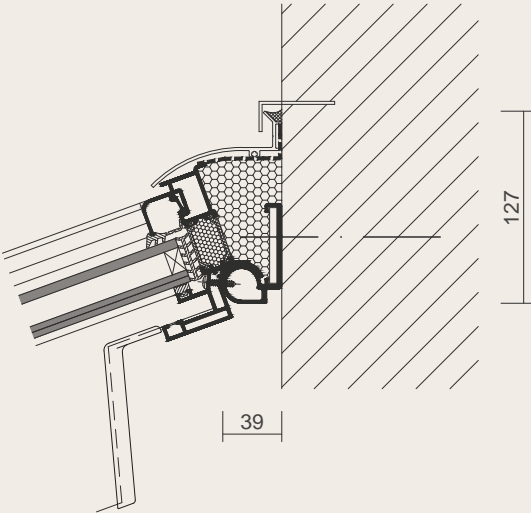


Version with stepped-edged glazing



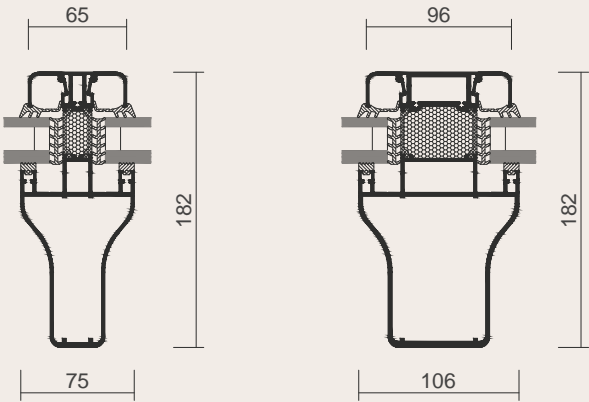
# SDL NOBILES

## Detail sections



Wall joint

Multi-section wall joint allows roof pitches from 5° to 45°.

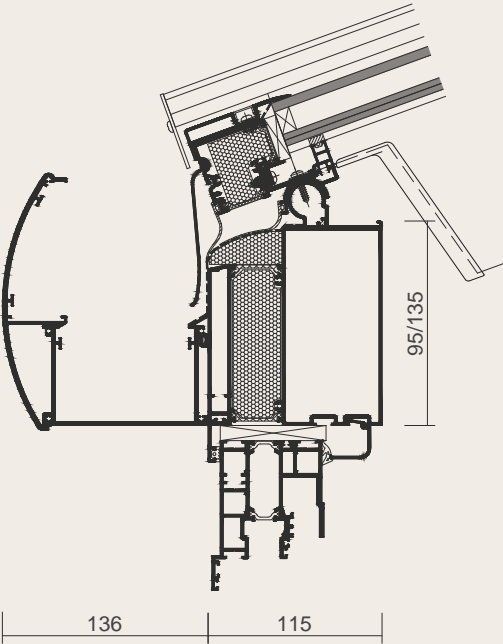


Rafters

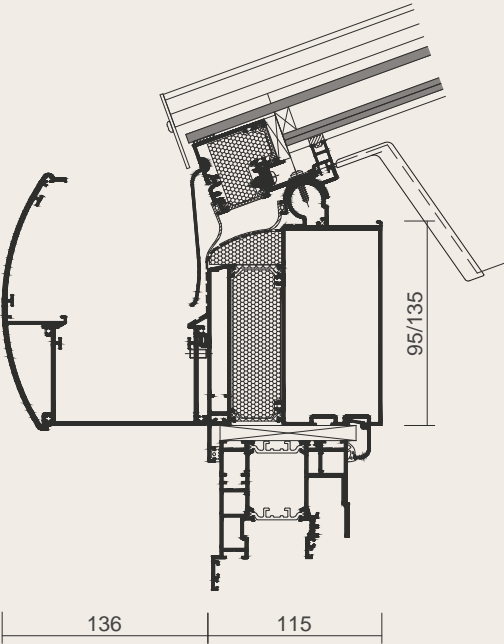
Two types of rafter with interior structural reinforcement. Available with steel reinforcement depending on structural requirements.

## Highly heat-insulated eaves

Multi-section eaves with rounded Softline profile on the ou side. Available in two sizes and with steel reinforcement depending on structural requirements. Compatible with vertical glass elements with different overall depths. Elegant interior support structure with glass moulding.



Version with pressure glazing

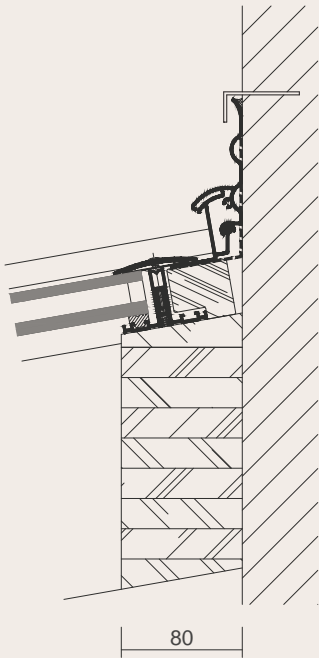


Version with stepped-edged glazing



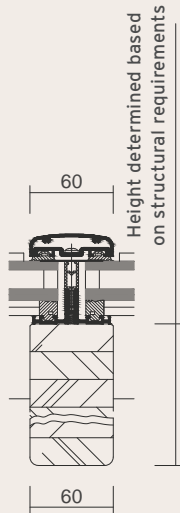
# SDL AVANTGARDE

## Detail sections



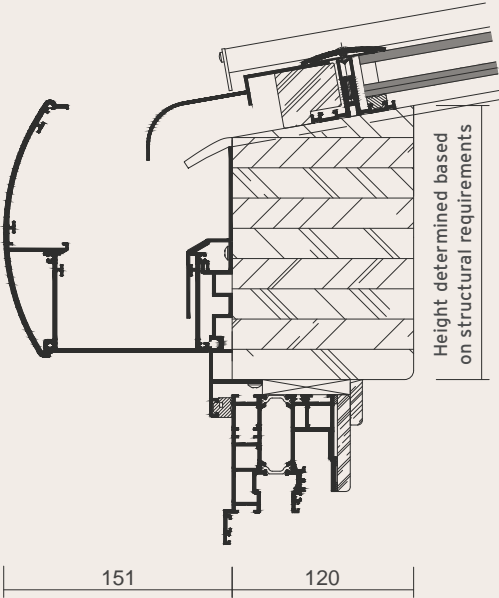
### Wall joint

Multi-laminate wooden wall joint with exterior aluminium profile over.



### Rafters

Multi-laminate wooden rafters with rear-ventilated aluminium covers. Height varies depending on structural requirements; with optional spotlight rail.



### Eaves

Multi-section, laminated wood eaves with rounded Softline profile on the ou side. Available in different sizes depending on structural requirements.





PLACE YOUR TRUST  
IN A STRONG *company*

ABOUT SOLARLUX



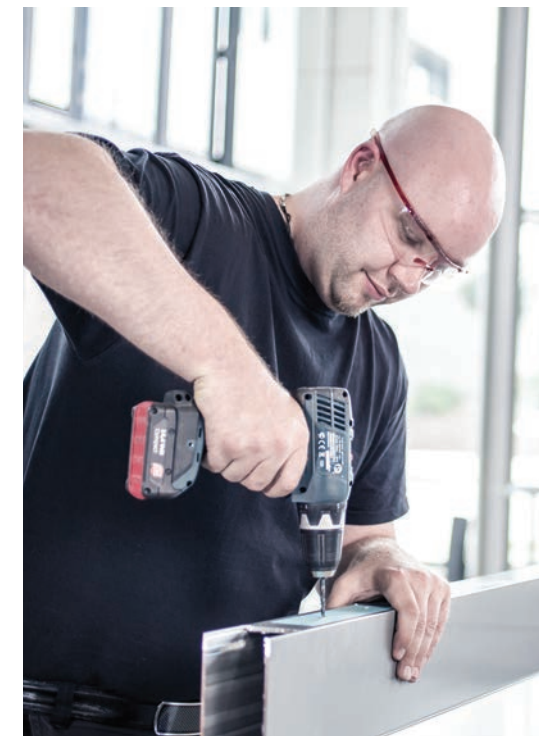


## A SPECIAL FAMILY-OWNED COMPANY

*Down-to-earth, innovative and passionate*

For more than 35 years, Solarlux has represented exceptional quality in the production of bi-folding doors, glass extensions and facade solutions. Founded by Herbert Holtgreife and based in the town of Melle, north-west Germany, the company is now managed by Holtgreife's son, Stefan. But the real driving force behind Solarlux is its employees: A workforce of around 850 imaginative men and women is vital for the success of the leading system provider.

The company's environmentally friendly approach to production, in-house production control structure and compliance with the highest quality standards are reflected in its ISO 9001, ISO 14001 and DIN EN 1090 certificates. When combined with the extensive community outreach that has been part of Solarlux ever since it was founded, this truly makes the family-owned company something special.



**"YOU CAN LOOK BACK,  
AND YOU CAN LOOK TO THE  
FUTURE. WE DO BOTH."**



# THE WORLD OF SOLARLUX



## WHAT DOES SOLARLUX STAND FOR?

- Family-owned company
- Certified in accordance with ISO 9001
- In-house Research and Development division
- 850 employees worldwide
- Successful projects in over 60 different countries
- Community outreach, sense of responsibility for people and nature



## PRODUCTION

- 55,000 m² production site in north-west Germany
- State-of-the-art manufacturing machinery
- In-house painting line and powder-coating plant
- Sustainable and energy-efficient
- Certified in accordance with environmental standard ISO 14001



## SOLARLUX PRODUCTS

- Made in Germany
- CE-approved
- Certified and independently tested
- Winner of national and international design awards
- Equipped with the best profile surface
- Comply with the strictest quality standards
- Custom products made to order
- Wooden surfaces with furniture quality



## SOLARLUX SERVICE

- Top-class consultation
- Everything from a single source
- Tidy assembly
- Private and public building projects handled professionally
- Maintenance and service agreements that extend beyond project completion





# KEEP TRACK OF SOLARLUX IN THE DIGITAL REALM

*Stay up to date*

Projects, references, news – the world of Solarlux moves fast, and an image is sometimes worth a thousand words. What more reason do you need to visit our website or the mySolarlux portal, or to follow us on social media?

But it should go without saying that, even in this digital age, we love hearing from you directly and answering your questions in person or on the phone. So don't delay – contact us today! Whether you'd like a zero-obligation consultation session, a sketch of your personal idea, or simply an answer to your question, there are plenty of ways to get in touch with us.





