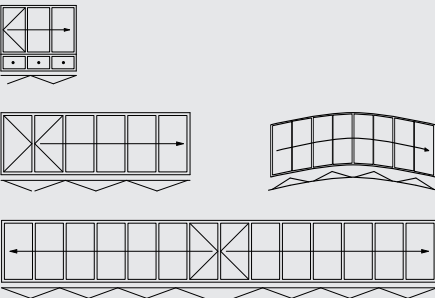


FLOOR TRACKS

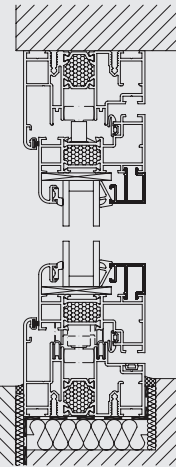


CONFIGURATION VARIANTS

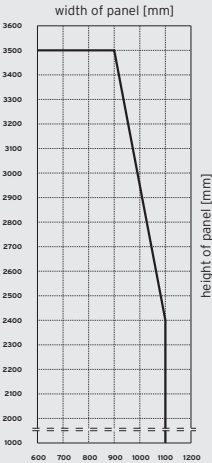


\* on request

VERTICAL SECTION



PANEL SIZE CHART



VARIANTS

- | Available as floor-mounted folding glass door
- | Can be folded outwards, to the left and/or to the right

PROFILE SYSTEM

- | 70 mm element thickness, 24 mm thermal break
- | 80 mm frame thickness
- | Slim panel and frame profiles (panel joint 157 mm)
- | Solid multi-chamber profiles with corner connection (compressed and glued)
- | Flush floor track without upstand for disabled access available

WINDOW/DOOR SYSTEM SL 80/81

- | Complete window system to match the folding glass door is available: tilt and turn, parallel slide and tilt, fixed panels

FITTINGS

- | No protruding runner and guide tracks
- | Segmentation possible (bending on request)
- | Open pair of panels can be rotated over 90 °
- | Lockable in any partly open position
- | Stainless steel handles and fittings are optional

GLAZING

- | Heat-insulating glass as standard
- |  $U_g = 1,1 \text{ W/m}^2\text{K}$  with 2 x 4 mm float glass
- | Triple glazing and other specialist glazing available
- | Glass thicknesses from 20 to 38 mm available

U-VALUE

- |  $U_w = 1,4 \text{ W/m}^2\text{K}$  ( $U_g = 0,7 \text{ W/m}^2\text{K}$ ) according to DIN EN ISO 10077 on the basis of a three-panel folding glass door, WxH 2700 x 2300 mm

SURFACE FINISH

- | Powder coating to RAL
- | Anodised aluminium to EURAS

MAXIMUM PANEL SIZES

- | 900 x 3500 mm
- | Panel weight up to 100 kg
- | Glazing bars are necessary for system heights over 3000mm
- | Special sizes on request

TESTED FOR

- | Ventilation Class 3 to DIN EN 12 207
- | Impermeability to rain Class 9A to DIN EN 12 208 (matches stress group C according to DIN 18 055)
- | Resistance to wind Class C3/B3 to DIN EN 12210
- | Airborne sound insulation till 45dB to DIN 52210
- | Hurricane test up to a wind force of 300 km/h following American standards (optional)



FOLDING GLASS DOOR  
SL 70e





**HEAT INSULATION**

Solid multi-chamber profiles with thermal break webs and foam core offer the best heat insulation according to the latest energy conservation regulations (EnEV).



**SAFE OPERATION**

The swing panel (in the case of an odd number of panels) is locked by means of a special catch ensuring the door can be carried along safely.



**SECURITY/COMFORT**

Stainless steel design handle with integrated multi-point locking system and catch bolt, lock and profile cylinder ensure high security.



**ENGINEERED**

Long-lasting stainless steel runners and tracks ensure easy, quiet and smooth operation of the folding glass doors. Due to the position the runners are protected against dust and dirt.



**STABILITY**

Espagnolettes with 24 mm throw lock the panels into the top and bottom track of the frame ensuring they withstand gales and afford high security.



**BARRIER FREE**

A flush floor track is also available that ensures barrier free living with easy access through large openings.



**WIDTH ADJUSTMENT**

Small adjustments to the overall width can be made to compensate for dimensional tolerances. The strong hinge pins provide high security.



**PANEL HEIGHT**

Through innovative profile technology a maximum panel height of 3500 mm can be achieved. The folding glass door is therefore particularly suitable for shop entrances.

