



Bifold doors





Content

Open rooms	06
Good reasons	08
Possibilities	12
Opening configurations	20
Material and surface	22
Systems	28
Technical features	30
Ecoline and Highline	32
Woodline	34
Combiline	36
Megaline	38
SL 35 and SL 45	40
Systems in comparison	42
Internal Bifold Doors – Flexa	44
Add-ons	46
Window to bifold doors	48
Accessibility and floor track variants	52
Equipment options	54
References	56
About us	78

Open rooms



Good reasons
Possibilities
Opening configurations
Material and surface

Bifold doors offer so much more than practical benefits, they transform the way you experience a space. With built-in advantages like safety, accessibility, energy efficiency, and sound insulation, they deliver performance you can rely on. But it's the freedom they bring that truly inspires. Whether creating a wintergarden (or glass extension) that opens almost entirely to the outdoors, replacing a traditional patio door with something far more versatile, or providing a seamless connection to your pool area, bifold doors make every setting extraordinary. In public spaces, they set the tone as an impressive business entrance, adding prestige to stadium VIP boxes, or redefining façades with striking elegance. Beyond bifold doors, entire façades can be designed with seamlessly integrated windows, skylights, fixed elements, and sliding doors. Every detail is perfectly harmonized, with consistent profile lines, glass positioning, materials, and finishes. And as always, everything is delivered in unmistakable Solarlux quality.

Good reasons



Maximum opening

The defining feature of the bifold door is its ingenious accordion-style folding system, creating an opening of nearly 100 %. When closed, it impresses with slim sightlines of just 99 mm at the panel joint.



Security and anti-burglary protection

Bifold doors offer exceptional quality and stability, some can effortlessly meet PAS24 requirements*, sometimes with an even number of panels, a unique feature in the market.

*PAS24 inclusion is specific ation dependent. Subject to further details such as configuration, number of panels and opening order.



Accessibility and convenience

Barrier-free floor tracks and durable stainless steel rollers ensure bifold doors offer maximum comfort in everyday living.



Thermal insulation and sound insulation

Bifold doors deliver outstanding thermal insulation and can, depending on the system, even meet passive house standards. With high sound insulation classes, they also ensure peace and quiet, even in the busiest surroundings.



Ref. 569

All references can be found in our database by quoting the reference number (ref.) *Spaces*





Housing

Family Home, Münster
Highline
Ref. 569



Family Home, Hamburg
SDL Akzent Plus Wintergarden with Highline
Ref. 1841

Wintergarden



Pool

Pool House, Bentveld
SL 60e
Ref. 1560



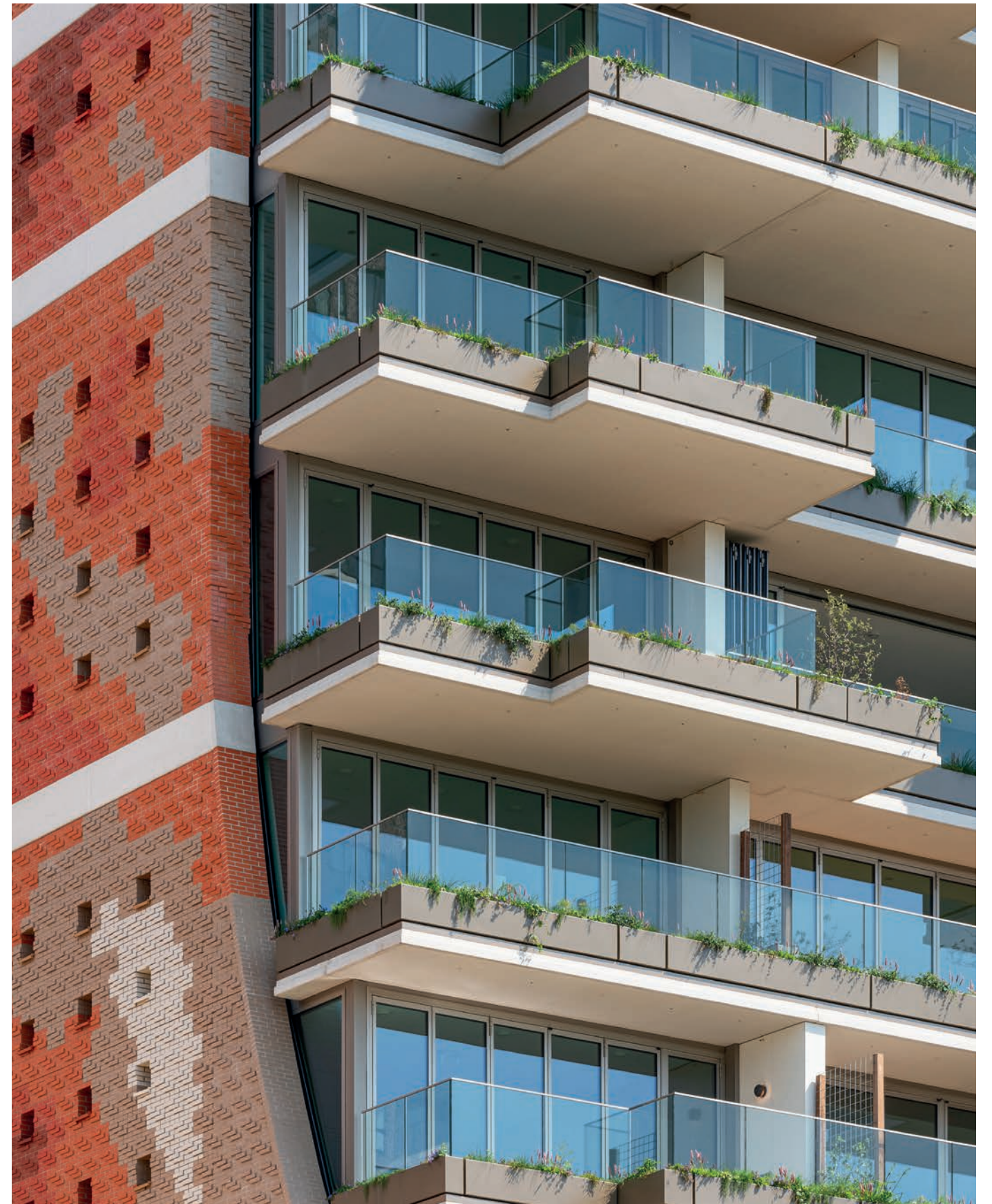
Hairdressing Salon, Osnabrück
Highline
Ref. 1794

Salon



Gastronomy

Hotel Restaurant, Bolzano
Highline
Ref. 1909



Work, Shopping and Residential Building, Amsterdam
Highline
Ref. 1327

Facade



Room divider

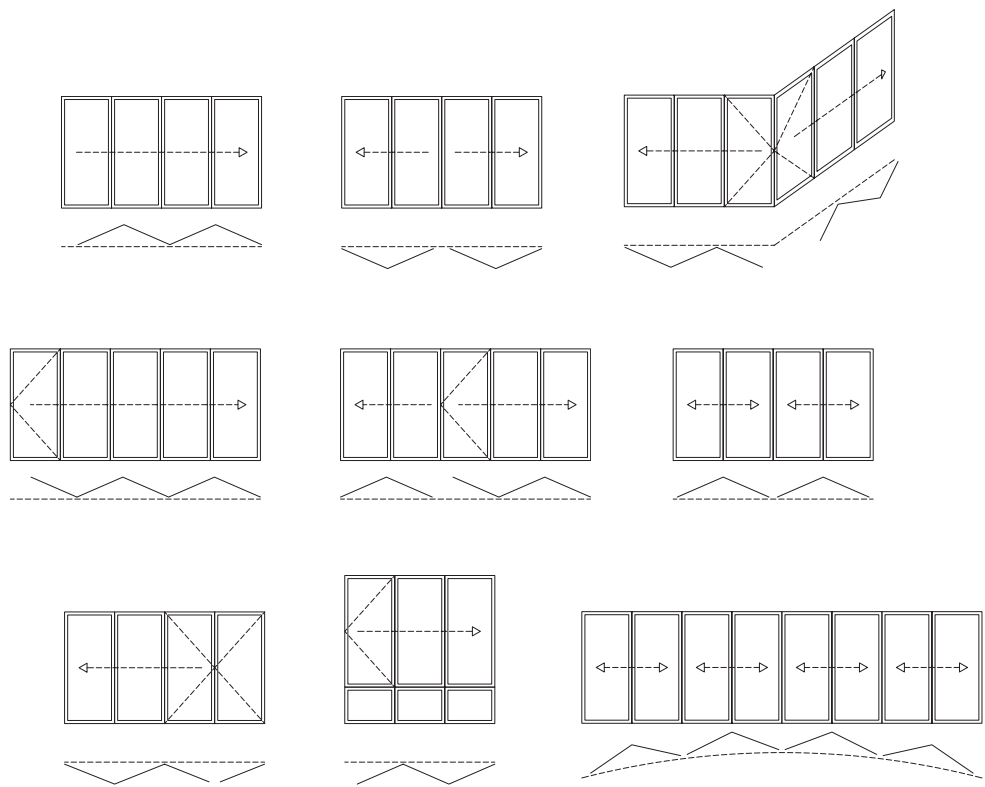
Office and Administration Building, Vienna
Highline Flexa
Ref. 1967



Passive House, Wierden
SL 45
Ref. 1237

Terrace

Opening configurations



You can find more animations of our opening configurations here



Opening inwards or outwards, folding to the left and/or to the right, Solarlux bifold doors offer countless opening configurations. With a wide variety of options, such as balustrade installation or integration into segmented floor plans, Solarlux systems adapt effortlessly to diverse projects. The large glass elements can be opened or closed across almost the entire surface with just a few simple movements.

Maximum combinability

Tilt-and-turn panels, fixed elements, and sliding doors can all be seamlessly combined with bifold doors. Matching profiles ensure a uniform look and perfect integration.

Foldable corner post

A striking architectural feature is the corner-opening bifold door, where two doors meet at a 90° angle, allowing the entire corner of the façade to open seamlessly. A specially designed corner post allows the panels to open fully, creating a completely unobstructed corner and a seamless connection between indoor and outdoor spaces.



Right-left sliding capability

Choosing which side to park your panels when the system is open isn't always simple. Solarlux stands out as one of the few manufacturers offering bifold doors with an even number of panels (2, 4, 6, 8, etc.) that can slide and fold in either direction, giving you complete flexibility.



Material and surface



Certified quality

Renowned national and international test institutes certify the exceptional quality of all Solarlux bifold doors. Beyond meeting the glass standard DIN 18008, every system carries the CE mark, confirming compliance with DIN EN 1090, mandatory for all steel and aluminum supporting structures since 2014. This seal assures both factory certification and rigorous in-house production control, guaranteeing reliable, top-quality performance.



Sustainability



Responsibility for the environment and resources

Solarlux pursues a comprehensive environmental and sustainability concept, which is reflected in numerous aspects of Solarlux products as well as energy-saving production. Consequently, the materials used, such as wood and aluminium, are durable and certified. Solarlux takes a responsible approach to natural resources, using water-based paints and environmentally conscious aluminium. Aluminium profiles are produced with hydroelectric power at Hydro and certified under the A.U.F. recycling cycle, ensuring 98 % of aluminium is recycled in a resource-saving, eco-friendly way.



Aluminium



Standard stainless steel handles,
optional in *black titan*

Aluminium – durable and low-maintenance

Aluminium profiles ensure durable, low-maintenance, and weather-resistant façades and windows. Sustainability is integral: Solarlux is certified under the A.U.F. recycling cycle, confirming 98% environmentally friendly, resource-saving aluminium recycling. Every aluminium bifold door can be customised in any color, including special finishes like anodised or DB with iron mica effect.

To ensure a visually seamless look, even for dark-colored bifold doors, handles are available in black titan. The coloring process creates a highly scratch-resistant surface that outperforms conventional methods. A burglar-resistant door handle set with a matching finish is also in development.



The Solarlux coating is certified according
to international standards

Our world of colours

Anyone who chooses a Solarlux bifold door opts for individuality. With around 30 RAL colors available in matte or silk gloss at no extra cost, every door can perfectly complement your home and furnishings. Our in-house coating, carried out in a state-of-the-art cleanroom facility, one of the most advanced in Europe, guarantees flawless surface quality.

The special colours

For a truly unique touch, Solarlux bifold doors can be customised in special DB (metallic iron effect) or RAL colors, with optional lacquer effects from premium manufacturers like Tiger. Fine-structured surfaces are also possible, and virtually any customer request can be realised, including coatings designed for special climatic conditions, such as lakeside locations.

Wood



Wood – individual and natural

Creating wooden systems demands skill, care, and expert wood treatment to unlock wood’s full potential. Solarlux uses premium woods, Red Grandis, silver fir, oak, spruce, pine, or meranti – paired with a variety of paints, varnishes, and oils, offering a rich palette of colors, textures, and design possibilities.

Surface finishes are highly customisable. Whether you prefer varnish, hand-oiled treatments, or opaque coatings, Solarlux products are available in any color. Standard coatings use premium-quality Remmers products, but paints from other manufacturers can also be applied seamlessly, ensuring your Solarlux system perfectly matches your existing windows or doors.

			
RAL 9016 Traffic white	Spruce Milk White	Oak Colourless matt	Spruce Afzelia
			
Spruce Pine	Spruce Colourless	Oak Teak	RAL 7016 Anthracite grey
			
Red Grandis Colourless matt	Red Grandis Oak	Red Grandis Uru Oak	Red Grandis Teak

In addition to the Solarlux standard colors, all desired colors are also available. Possible colour deviations may be due to different woods and their properties or printing technology and do not constitute grounds for complaint.

Gloss levels

With wooden bifold doors, you can choose from a wide range of RAL colors, tinted glazes, or oiled wood finishes, and select either matte or silk gloss surfaces at no extra cost. This extensive variety allows you to create a truly unique and personalised style.

Systems



Technical features

Ecoline / Highline

Woodline

Combiline

Megaline

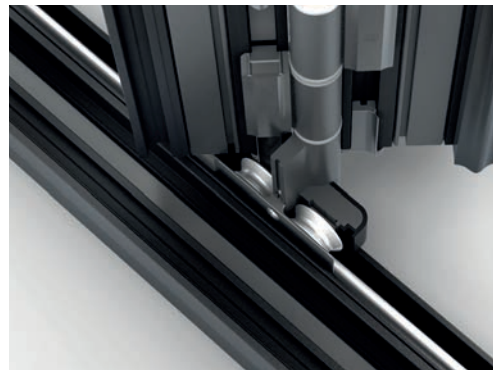
SL 35 / SL 45

System Overview

Bifold doors in the interior – Flexa

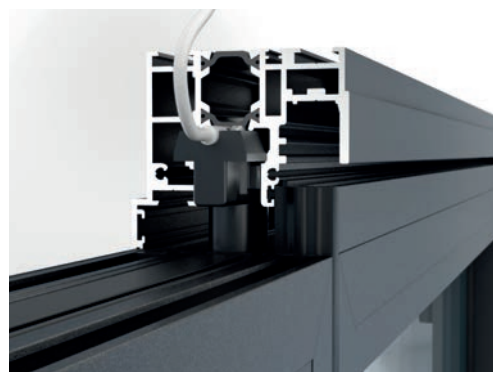
The Solarlux bifold door range, available in aluminium, wood, or a wood/aluminium combination, offers unmatched advantages. Advanced technical features such as precision carriages, barrier-free floor tracks, frame covers, and the patented TwinX® sash centering system are integrated across all systems, while each design also addresses the unique requirements of wood or aluminium profiles. This versatile system also excels in installation. Thanks to standardised designs and advanced fitting technology, all bifold door systems offer easy adjustment and fast installation, maximising flexibility and ensuring smooth project execution.

Technical features



Carriage

The stainless steel carriage, equipped with double-row grooved ball bearings, glides smoothly and quietly. Optimal load transfers to the carriage and the running track, supporting even the heaviest panels, while the entire stainless steel sliding system remains low-maintenance and virtually wear-free.



Locking

The Solarlux special gearbox, with a 24 mm upward and downward stroke into the frame, delivers outstanding security. Lock monitoring with reed contacts, concealed horizontal cable routing, and RC2 or RC2N configurations are all possible. Uniquely, the Ecoline and Highline systems can even be equipped to meet the RC3 standard.



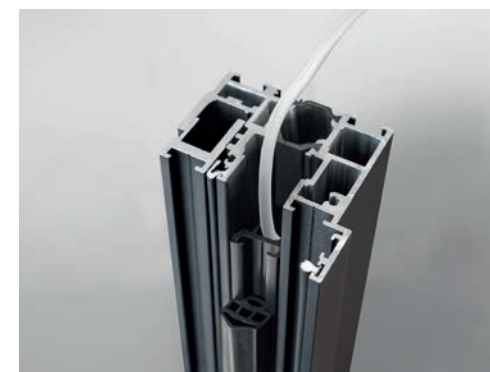
TwinX®

The TwinX concealed panel centering mechanism® stands for continuous, homogeneous wing design (only the upper and lower hinges are visible). It centers the panels in relation to each other, stabilises under high wind load, and ensures an even joint alignment. Another advantage is the continuous, uninterrupted sealing levels.



Wing catch

The functional wing catch *Comfort Snap* offers maximum ease of use for optimal opening and closing processes. The swing panel opens and closes smoothly and safely in a controlled sequence. When fully opened, it locks into the next panel and automatically releases when closing, ensuring effortless operation.



Frame cover

Due to the polyamide frame cover, all fastening screw heads are no longer visible. In addition, the resulting cavity between the base of the profile and the cover can be used for concealed cable routing or to accommodate an additional convection chamber interruption seal.



Cleaning fitting

The cleaning fitting *Cleaning Pin* can be locked and unlocked conveniently and allows easy cleaning of the outer sides of the sashes, even at upper floor heights. Thanks to its new locking technology, it is impossible to operate incorrectly. The new safety lock prevents the hinge pin from falling out.

Ecoline and Highline

Insulated



Slimmest profiles, patented technology

The thermally insulated Ecoline and Highline bifold door systems maintain a sleek 99 mm sightline at the panel joint, despite their different installation depths (67 mm and 84 mm). At the heart of this innovation is the bionicTURTLE® – a multifunctional break profile that combines numerous technical features. Its design enables ultra-slim profiles even with large panels and heavy wings, while accommodating locks and fittings and providing outstanding insulation. The Ecoline and Highline bifold doors are not only technically outstanding but also excel in design, an achievement recognized internationally, with the new bifold door winning four prestigious awards.

Ecoline

- + installation depth 67 mm
- + sight line 99 mm
- + Glass thickness from 5 - 36 mm
- + $U_w \geq 1.1 \text{ W/m}^2\text{K}$
- + Panel width up to 1 m, panel height up to 3 m
- + Sash weight up to 90 kg

Highline

- + Installation depth 84 mm
- + sight line 99 mm
- + Glass thickness from 22 - 60 mm
- + $U_w \geq 0.8 \text{ W/m}^2\text{K}$
- + Panel width up to 1.1 m, panel height up to 3.5 m
- + Sash weight up to 110 kg



Ref. 1239

Woodline

Insulated



Comfortable living with individuality

For a comfortable, modern living experience, choose Woodline bifold doors, perfect for those who want style and functionality without compromise. The profiles are crafted from multi-layered laminated wood, with additional stability provided by a special corner connection of the sashes. The frame features an aluminium structure fully clad with solid wood slats inside and out. A slim 143 mm sightline at the sash joint ensures maximum transparency even when closed, truly the epitome of living close to nature.

- + Depth of the wing profile 86 mm
- + Viewing width 143 mm
- + Glass thickness from 28 - 48 mm
- + $U_w \geq 0.89 \text{ W/m}^2\text{K}$
- + Panel height up to 2.8 m
- + Panel weight up to 100 kg

© Studio PROTOTYPE - ROBERTINO NIKOLIC

Ref. 575



Combilline

Insulated



The combination for perfect weather resistance

The Combilline bifold door, with its wood/aluminium profiles, delivers maximum weather resistance. The sash features an 86 mm construction depth, topped with an angular aluminium cover on the exterior wood profile. The subframe is made of aluminium, with the inner frame clad in solid wood strips. Two continuous sealing levels ensure optimal drainage and superior protection against the elements.

- + Structural depth of the sash profile 86 mm
- + Sight line 147 mm
- + Glass thickness from 28 - 52 mm
- + $U_w \geq 0.97 \text{ W/m}^2\text{K}$
- + Panel height up to 2.8 m
- + Panel weight up to 100 kg
- + Particularly high weather resistance due to applied aluminum cover shells

A wood/aluminium variant of the bifold door is also available on request, which achieves highly heat-insulated passive house standard. The sash construction depth in this variant is 96 mm and achieves a U-value of $\geq 0.8 \text{ W/m}^2$ with triple glazing.



Megaline

Insulated



Maximum requirements met with Solarlux quality

The highly thermally insulated Megaline bifold door is ideal for exceptionally tall or wide panels. Depending on the system, several system bands can be arranged on top of each other. This ensures exceptional stability for panels weighing up to 150 kg, even under strong wind loads. With maximum panel heights of up to 4.5 m or widths up to 1.5 m, Megaline accommodates extreme sizes – such as over two floors, without compromising smooth operation or ease of use.

- + Highly thermally insulated aluminium profile system
- + Panel height up to 4.5 m or width up to 1.5 m for particularly high requirements
- + Sight line of 132.5 mm in the panel butt joint
- + Single-sided profile doubling on the vertical panel profile
- + The maximum weight per panel is 150 kg
- + $U_w \geq 0.9 \text{ W/m}^2\text{K}$
- + Horizontal rungs may be necessary for structural reasons from a system height of 2.55 m
- + The form-optimized stainless steel running track with tapered casters enables the use of barrier-free floor tracks in accordance with DIN 18040



SL 35 and SL 45

Non-insulated



Wind and weather protection for balconies and terraces

Depending on the requirements, the use of an uninsulated bifold door can also be a glass canopy or anywhere where thermal insulation does not play a central role.

Features SL 35

- Cleaning fitting for cleaning the outside of the sash at high storey heights
- High stability due to tongue and groove joint and stable corner connectors

Features SL 45

- Some of the panels can be opened inwards, while others can be opened outwards
- Segmentation of the system up to 22.5° possible

- + Uninsulated aluminium systems
- + 35 mm or 45 mm installation depth
- + No protruding running and guide rails
- + Low-wear, even after 10,000 operations
- + Recessed floor track without rebate for accessible living
- + Sealing against rain and wind all around in two sealing levels



Systems in comparison

	Ecoline	Highline	Megaline	SL 35
Material				
Aluminium	●	●	●	●
Wood	○	○	○	○
wood/aluminium	○	○	○	○
Profil				
Thermally insulated	●	●	●	○
Non-insulated	○	○	○	●
Frame depth	67 mm	84 mm	84 mm	35 mm
Panel joint sight line	99 mm	99 mm	132.5 mm	100 mm
Frame height	0 - 72 mm	0 - 72 mm	0-99 mm	5 - 70 mm
Glazing				
Glass thicknesses	5 - 36 mm	22 - 60 mm	22 - 60 mm	5 - 18 mm
Thermal insulation value				
Thermal transmission coefficient according to DIN EN ISO 10077-1	≥ 1.1 W/m²K	≥ 0.8 W/m²K	≥ 0.9 W/m²K	-
Panel				
Max. leaf dimensions (max. width; max. height)	1 m; 3 m	1.1 m; 3.5 m	0.9 x 4.5 m or 1.5 x 2.3 m	0.9 m; 2.6 m
Max. panel weight	90 kg	110 kg	150 kg	65 kg
Impermeability				
Resistance for wind load according to DIN EN 12210	B4	B4	B4	B1
Impermeability to driving rain according to DIN EN 12208	8A	9A	7A	4A
Air permeability according to DIN EN 12207	3	3	3	2
Burglar resistance according to DIN EN 1627-1630				
	RC2/RC2N	RC2 / RC2N / RC3	-	-
Sound insulation class according to DIN EN ISO 10140-2				
	45 dB	46 dB	npd	31 dB
Continuous function according to DIN EN 12400				
	2	2	2	-
Insect screen blind* max. width 4600 mm Single roller blind, max. width 9000 mm double roller blind, max. height 4000 for both mm				
	●	●	●	○

	SL 45	Woodline	Combiline
Material			
Aluminium	●	○	○
Wood	○	●	○
wood/aluminium	○	○	●
Profil			
Thermally insulated	○	●	●
Non-insulated	●	○	○
Frame depth	45 mm	86 mm	86 mm
Panel joint sight line	117.5 mm	143 mm	147 mm
Frame height	5 - 64 mm	0 - 72 mm	0 - 72 mm
Glazing			
Glass thicknesses	5 - 20 mm	28 - 48 mm	28 - 52 mm
Thermal insulation value			
Thermal transmission coefficient according to DIN EN ISO 10077-1	-	≥ 0.89 W/m²K	≥ 0.97 W/m²K
Panel			
Max. leaf dimensions (max. width; max. height)	1.1 m; 2.8 m	1 m; 2.8 m	1 m; 2.8 m
Max. panel weight	100 kg	100 kg	100 kg
Impermeability			
Resistance for wind load according to DIN EN 12210	-	C3	C3
Impermeability to driving rain according to DIN EN 12208	4A	7A	7A
Air permeability according to DIN EN 12207	3	3	3
Burglar resistance according to DIN EN 1627-1630			
	-	RC2/RC2N	RC2/RC2N
Sound insulation class according to DIN EN ISO 10140-2			
	25 dB	42 dB	42 dB
Continuous function according to DIN EN 12400			
	2	2	2
Insect screen blind* max. width 4600 mm Single roller blind, max. width 9000 mm double roller blind, max. height 4000 for both mm			
	○	●	●

Internal Bifold Doors – Flexa



Flexible concepts for adaptable space utilization

The Flexa-line makes it easy to divide or expand interior spaces in just a few simple steps. It offers three types of insulated and non-insulated room dividers, with or without a minimal floor track. Transparent partition walls enable flexible room concepts within existing floor plans, ideal for creating open offices with flexible separation, hotels, or residential spaces. Panels operate intuitively, moving individually and parking anywhere along the track, to the right, left, or center, providing maximum versatility and ease of use. This creates endless possibilities for flexible, adaptable use of space.



Add-ons



Window to bifold doors
Accessibility and floor track variants
Equipment options

A wide range of additional options is available for the entire bifold door range, allowing you to enhance security, thermal and sound insulation, lighting, or comfort as needed. The ability to combine components individually makes each bifold door even more appealing and tailored to your needs.

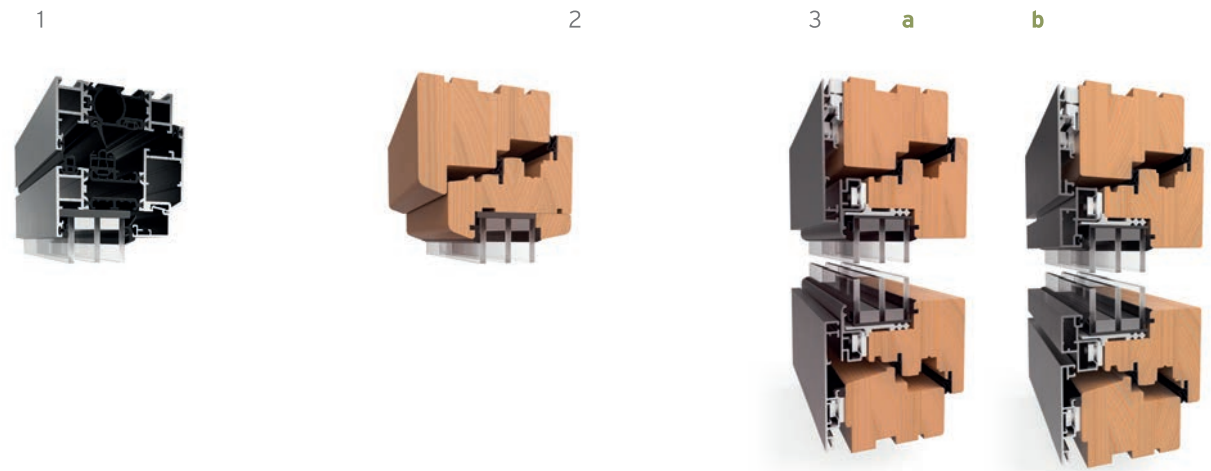
Window to bifold doors



© Studio PROTOTYPE · ROBERTINO NIKOLIC

Turn-and-tilt, tilting and fixed elements

To complement our bifold doors, we offer a full range of matching window elements: Ecoline and Highline aluminium systems, Woodline wooden windows, and Combiline wood/aluminium models. Choose from classic tilt-and-turn windows, motorised skylights, or fixed elements. The advantage: all window profiles perfectly match the bifold doors, creating a seamless, uniform appearance. Windows and folding elements undergo the same coating or painting process, ensuring consistent color and finish throughout.



1 Ecoline & Highline

The aluminium window elements can be realised in fixed, tilting and tilt-and-turn variants, with the window sashes opening inward to the right or left.

- Overall frame depth: 67 mm (Ecoline) or 84 mm (Highline)
- Minimum panel sight line of 78.5 mm or 100 mm with frame
- Fixed, tilting and tilt-and-turn elements possible
- RC2- / RC2N- / RC3*-Execution optional
- Up to four sealing levels possible

*only applies to Highline

2 Woodline

The window profiles are made of multiple laminated quality wood form-fitting Plug-Tec corner joint, as well as a make additional screw connection the wings are extremely stable.

- Frame depth of 91mm in both sash and outer frame profile
- All-round sight line: 72 mm for the fixed window and 100 mm for the element with sash
- Glass-dividing glazing bar optional in various profile widths

3 Comiline

The thermally insulated window system with a frame depth of 89 mm in the sub-frame profile is equipped with an angular aluminium cover on the outside and is available in two different profile designs. The sight lines of the panel frames depend on the design variants of the aluminium cover shells.

a Minimum profile:

- Sash frame almost completely covered from an angular aluminium cover shell (sight line 88 mm)
- In closed position, all-round sash view of 10 mm

b Flush profile:

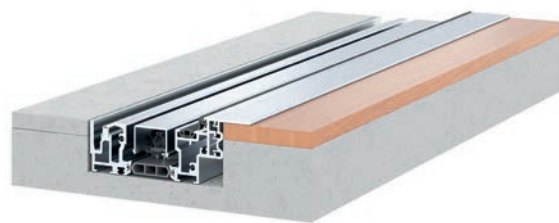
- Exterior wooden frame completely faced with an angular aluminium cover shell (sight line 68 mm)
- Panel frame encased in a box-shaped profile (25 mm sight line)
- Continuous flush mounting between sash and frame on the outside

	Ecoline window	Highline window
Material		
Aluminium	●	●
Wood	○	○
wood/aluminium	○	○
Profil		
Frame depth	67 mm	84 mm
Sash depth	77 mm	94 mm
Sight line fi ed element frame	0-72 mm	0-87 mm
Visible internal sash width	78.5 mm	78.5 mm
Sash/mullion/sash sight line	173 mm	173 mm
Frame height	Max. 2,400 mm	Max. 2,400 mm
Glazing		
Glass thicknesses	Will accept glass sets from 5 - 36 mm	Will accept glass sets from 22 - 60 mm
Dry glazing	●	●
Thermal insulation value		
thermal transmission coeffici t according to DIN EN ISO 10077-1*	$U_w \geq 0.9 \text{ W/m}^2\text{K}$	$U_w \geq 0.7 \text{ W/m}^2\text{K}^{**}$
Sashes		
Sash weight	Max. 150 kg	Max. 150 kg
Sash width	Min. 365 mm Subject to wind and impact load	Min. 365 mm Subject to wind and impact load
Special size on request	●	●
Impermeability		
Resistance to wind load according to DIN EN 12210	B4	B4
impermeability to driving rain according to DIN EN 12208	8A	9A
Air permeability according to DIN EN 12207	3	3
Burglar resistance according to DIN EN 1627-1630		
Acoustic class according to DIN EN ISO 10140-2	32 dB	32 dB
Durability in accordance with DIN EN 12400	2	2

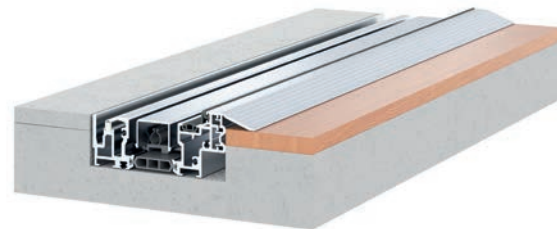
*Values related to standard window size (W x H) 1230 x 1480 mm, with glass $U_g = 0,5 \text{ W/m}^2\text{K}$
Result with additional sealing and insulation components

	Woodline window	Combiline window
Material		
Aluminium	○	○
Wood	●	○
wood/aluminium	○	●
Profil		
Frame depth	91 mm	89 mm
Sash depth	91 mm	96 mm (MP), 105 mm (FP)
Sight line fi ed element frame	0 - 72 mm / 0 - 100 mm	0 - 62 mm / 0 - 101 mm
Visible internal sash width	72 mm	72 mm (FP, MP)
Sash/mullion/sash sight line	160 mm	170 (MP) / 190 (FP)
Frame height	Max. 2,400 mm	Max. 2,400 mm
Glazing		
Glass thicknesses	Will accept glass sets from 28 - 48 mm	Will accept glass sets from 28 - 52 mm
Dry glazing	●	●
Thermal insulation value		
thermal transmission coeffici t according to DIN EN ISO 10077-1*	$U_w \geq 0.7 \text{ W/m}^2\text{K}$	$U_w \geq 0.7 \text{ W/m}^2\text{K}$
Sashes		
Sash weight	Max. 150 kg	Max. 150 kg
Sash width	Minimum 400 mm Subject to wind and impact loads	Minimum 400 mm Subject to wind and impact loads
Special size on request	●	●
Impermeability		
Resistance to wind load according to DIN EN 12210	C3	C3
impermeability to driving rain according to DIN EN 12208	9A	9A
Air permeability according to DIN EN 12207	4	4
Burglar resistance according to DIN EN 1627-1630		
acoustic class according to DIN EN ISO 10140-2	32 dB	32 dB
durability in accordance with DIN EN 12400	2	2

Accessibility and floor track variants



Flat floor track suitable for living spaces



Accessible floor track with ramp



Minimal floor track

Smart 10 – The new generation of floor tracks

The new generation Smart 10 bifold door floor tracks, with a remarkably flat 10 mm edge, create even smoother transitions. Despite the flat threshold, these tracks are fully suitable for living spaces and deliver excellent performance in driving rain resistance and wind load. Smart 10 also complies with the adapted DIN EN 18040 standard for barrier-free construction, ensuring European requirements are met for accessible planning, execution, and outfitting of apartments, residential buildings, and their outdoor areas.

The new 10 mm floor tracks offer versatile options for connecting to existing flooring. Depending on your needs, an inclined or horizontal ramp can create an optimal transition, ensuring seamless indoor-to-outdoor flow, both visually and functionally.



Further information, including on the certified roll-over capability of the floor tracks, can be found here



Residential floor track with ramp for inward-opening bifold doors

Equipment options



Sun and insect protection

The sun protection or insect protection roller blind blends in seamlessly and offers maximum sizes with the best ease of use. Numerous configuration options as well as compatibility for inward- and outward-opening bifold doors make the roller blinds versatile in almost any project. The robust aluminum frame can be individually color-adjusted, the same applies to the fabrics of the insect protection mesh and the light-resistant colors of the sun protection.



Security options

The bifold door systems can be equipped with additional safety technology if required. An RC2-certified lever door handle in combination with the Solarlux convenience lock is also available, as is burglar-resistant glazing in category P4A approved according to DIN 1627-1630.



Illuminated floor track

For all floor track types, the 3S-Protection impact profile is available upon request across the entire bifold door family. Highline and Megaline systems can also be fitted with optional LED lighting and concealed wiring, creating a special ambience in the evening. Additionally, the lighting serves as an orientation aid in compliance with DIN 18040, supporting easy access and navigation for visually impaired individuals.



Shading

Solarlux pleated blinds provide optimal protection from sunlight while ensuring privacy. They can be locked in any position for precise shading and privacy control. Available as single or double elements, the blinds are easily adjusted by simply pulling and sliding to the desired position.

References



Completed projects with:
Ecoline / Highline
Woodline
Combiline
Megaline
SL 35 / SL 45
SL 80

A bifold door is more than just a building element, it's a statement of lifestyle. No other window or door system can create such expansive openings or evoke such a distinctive atmosphere. Seamless transitions from indoors to outdoors give every room its own character, complemented by an almost limitless choice of colors and the fundamental choice between wood or aluminium. The following references showcase just a few of the countless design possibilities with bifold doors.

Ref. 2034

The new home of this family, designed as a personal retreat, was meant to reflect their values. Architecturally, it posed a challenge: the 50-year-old detached house on a slope had unclear room layouts.

A core renovation focused on connection and sustainability as guiding principles. The kitchen was transformed into a multifunctional space with direct garden access, barrier-free and without visual partitions. Narrow-profile bifold doors, which can be fully folded away, seamlessly link interior and exterior, perfectly embodying the home's central theme of openness and flow.



Ecoline





Ref. 2033



Generate energy and refuel energy, is how Stadtwerke Freisingen describes the goal of this extraordinary project. An innovative combined heat and power plant, which houses a neighborhood café on the lower floor, supplies the adjacent development area with energy and offers a cozy meeting place.

The responsible architectural firm created a building with complex content and simple form instead of a simple functional building. The use of the Woodline bifold doors made of oiled larch in the lower floor creates a visual contrast to the massive concrete structure on the upper floor. As soon as the outside temperatures allow, the café will be opened over a large area with the bifold doors, inviting residents to exchange ideas and linger.

Woodline



Ref. 1902

As part of the redesign of the former BUFA film site in Berlin, the former office building will serve as a striking campus reception and co-working space with a new cafeteria after its repurposing. For the *House 1* Corn yellow was chosen as the striking shade for all stairs, components and window elements of the building. Accordingly, the bifold doors of the café on the ground floor are also coated in this color, offering a total of three seamless transitions into the heart of the campus, the garden. Even when closed, daylight floods freely into the room, and the integrated turning door makes it easy to enter without having to open the individual elements. The slim profile views allow for a maximum view of the garden and also fulfil the desire for a strong connection to the outdoor space.

Ecoline



Ref. 1732

Old walls in a new function: A former Printen bakery in Cologne is being transformed into a family's home. An open residential building including an inner courtyard with industrial charm is created. For the architect and his construction team, it was clear from the outset that the hand-fired bricks of the old bakery would be allowed to remain, but the remaining existing structures with the exception of the exterior walls should be demolished, the flexible and open living concept took priority. It quickly became clear that bifold doors, which create transitions between indoors and outdoors throughout the house, would be the perfect match. The little daughter can now ride her tricycle back and forth between the living area, courtyard and guest wing without having to get off.



SL 80





Ref. 1987



A large kitchen as the center of the house for cozy gatherings with family and friends is what the owner of this house wishes for. Also on the wish list: An open, uncovered terrace to fully enjoy the warm, Bavarian summers. The house was literally planned around the kitchen and now frames the terrace on two sides. When the client and her husband heard about the bifold doors made of wood/aluminium, which do not require a fixed corner post at all and thus open the house completely at the corner, it quickly became clear that the facade solution with these special bifold doors is the perfect solution. Now, the couple enjoys a completely open kitchen in the summer without any disturbing posts. Even in winter, the floor-to-ceiling glazing provides atmospheric views.

Combiline

Ref. 1618

The old coffee grinder house from 1934 is brimming with lovingly selected details by the owner and her family. But until the *Villa Haller* shone in new splendor, there was a lot to do, so the complete renovation took over eight months. A central point was the decision to build an extension: This would house a new kitchen with a freestanding kitchen island, leaving the exterior walls clear and creating new access to the terrace and garden. The use of almost three-meter-high glass elements in the bifold doors with dark aluminum frames emphasises the airiness of the extension, whose look captures the charm of industrial lofts. But the functionality and the ability to fold away the elements were also convincing: Now the family sits in their kitchen when the weather is nice and, with the bifold doors open, enjoys real *open-air feeling*.



Highline





Ref. 1709

The new build on a slope perfectly reflects the life philosophy of its builder: living in just one open, spacious space, preferably without doors, in which the boundaries between inside and outside blur. His house extends over two levels, but life takes place almost entirely on the upper, more generously dimensioned floor. Here, the building opens up to the forest at ground level at the rear, while it presents itself with a breathtaking view towards the valley. The bifold doors installed in various places in the house support the desire for spaciousness. The eight-meter-wide front in the living area, which offers an unobstructed view of the valley, can be almost completely opened. This transforms the interior into an open, light-flooded platform.



Highline



Ref. 2073

This architectural firm has convincingly succeeded in building on what already exists and preserving the history of the city with the transformation of a former parking garage into a residential building in Paris. The original building was extended and opened up in such a way that bright living spaces could be created. The existing façade on a busy main road was retained, but was expanded into a double-skin façade. Barrier-free wooden bifold doors close off the living space from the uninsulated facade. When closed, the slim frame profiles allow plenty of daylight into the apartments, while the space between them also serves as an acoustic and thermal buffer. If the elements are completely opened, a balcony situation is created, the newly designed rooms thus optimally meet the requirements of modern living in terms of functionality and comfort.



Woodline

Ref. 2013

If you didn't know better, you might think of a holiday home in the American Hamptons, but in fact, this couple's summer residence is located in a small town on the Swedish west coast. The wish was to create a house that invites outdoor living – ideally with many flowing transitions between indoors and outdoors. Built in a U-shape, this concept is particularly impressive in the *Orangery* – a light-flooded wintergarden that connects the main house and the guest area. Large bifold doors allow a flexible opening of the room, which in summer is the most pleasant place in the house through which the air can flow. No wonder it has become the favorite room of the family, who use it constantly in every season.



Ecoline





Ref. 399



Ref. 704



Ref. 1718



Ref. 1343



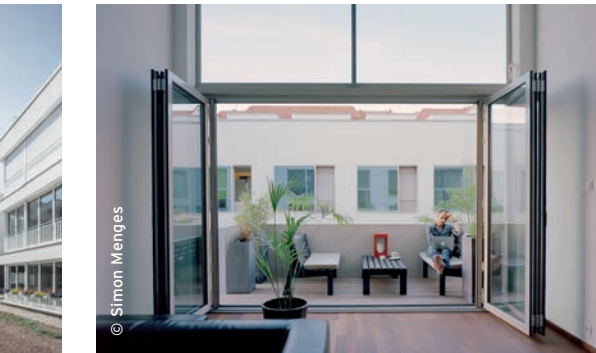
Ref. 1731



Ref. 1606



Ref. 327



Ref. 1978



Ref. 1959



Ref. 1408



Ref. 569



Ref. 1713



Ref. 1417



Discover our
Reference database *Spaces*



Ref. 164



Ref. 1688



Ref. 1847



Ref. 1105

Ref. 1411



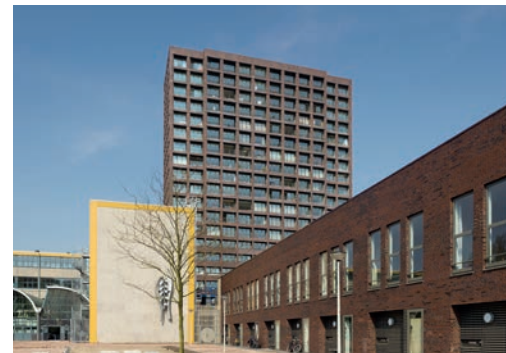
Ref. 52



Ref. 1983



Ref. 93



Ref. 1716



Ref. 1124



About us

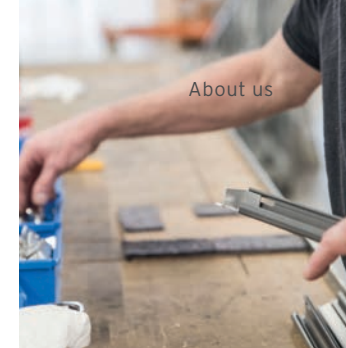


Pioneers of solar architecture
 Contacts and showrooms
 Solarlux Quality Partner
 Our quality promise
 Digital Services

Solarlux has been synonymous with excellent quality for over 40 years in the production of bifold doors, sliding windows, wintergardens and façade solutions. Founded by Herbert Holtgreife and Heinz-Theo Ebbert († 1990), the company is now managed by Stefan Holtgreife in the second generation. But above all Solarlux relies on its employees: around 1,000 dedicated and imaginative women and men worldwide contribute daily to the success of the leading system provider.

From the initial idea of using the heat of the sun as an energy input for rooms, Solarlux developed a diverse portfolio of wintergardens, glass houses, and patio roofs, as well as large-format and flexible facade elements. The family-owned company's offering is aimed at architects as well as private individuals and offers custom-made solutions of the highest quality for this broad target group. The desire for perfect service and the aspiration to starting where others give up, encourages Solarlux and its employees anew every day.

Pioneers of solar architecture



About us



81

Custom-made systems: made-to-order manufacturing in state-of-the-art production facilities



Solarlux Campus in Melle

Tested quality: intensive testing and further development in our in-house research and development

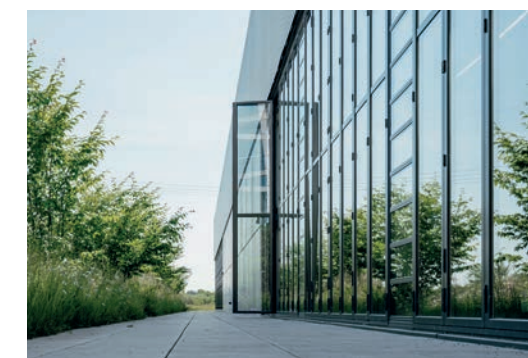


The idea behind Solarlux

We see ourselves as pioneers of solar architecture. Not only have our products always connected interior and exterior with transparent and movable glazing solutions, but they also have a lasting positive influence on the energy balance of a building. This principle is also consistently applied at the Solarlux Campus. In combination with a cogeneration unit, geothermal energy and one of the largest Photovoltaic systems in the Osnabrück area are a unique industrial building has reached KfW 55 level – an above-average value for a building of such size. The achieved CO₂-Compensation: more than the emissions of 1,084 four-person households per year. This means that the Solarlux Campus is already almost energy-neutral today and further investments in innovative and sustainable Energy concepts will follow.

Tangible product experience: over 3000 m² Exhibition space on the Solarlux Campus

Sustainability in action: ecology and production processes in harmony





Wintergarden: fully-fledged living space, suitable for any house architecture

Maximal sliding systems: transparent living at the highest level



Contacts and showrooms

At every stage of your project, our team of experienced architectural consultants, sales managers, and technical advisors are here to support architects and planners in bringing your vision to life.

To experience the quality and innovation of our glazing solutions up close, we warmly invite you to visit one of our inspiring showrooms. Our flagship exhibition space, spanning nearly 3,000 m², is located at the Solarlux Campus in Melle, Germany. Here, you'll find the full spectrum of our product range presented in a dynamic and immersive setting.

If you're based in the UK, we'd be delighted to welcome you to our showroom in Welwyn Garden City. Whether you're an architect or a private client, our dedicated consultants are on hand to offer expert guidance and tailored support for your project.

Solarlux headquarters in Melle, Germany

Industriepark 1 · 49324 Melle · info@solarlux.com · T +49 5422 9271-0
(Address for your navigation device: Allendorfer Straße 16, 49324 Melle)

Solarlux showroom in Welwyn Garden City

Unit 5 Quadrant Park · Mundells · Welwyn Garden City · AL7 1FS · UK
T +44 (0)1707 339970



Terrace roofs: large openings connect inside and outside

Glass facades: wind protection, weather protection, sound insulation, depending on the project and requirements



Contact our team in UK & Ireland



Your Solarlux consultants in UK & Ireland



Your Solarlux consultants worldwide

The Solarlux Quality Partners – premium quality directly at your location



Quality seal: With Quality Partners, you receive Solarlux quality, and with Gold Partners, you can also expect the complete Solarlux range and brand experience

Nothing counts more than literally grasping quality with your own senses. That is why we have relied on a strong network of qualified specialist partners – the Solarlux Quality Partners – for many years. Each of these more than 90 specialist dealers in our network is regularly trained at our headquarters on the Solarlux Campus and can demonstrate special expertise in the areas of consulting, planning, and installation. Only with our Quality Partners do you have the opportunity to get an extended 10-year warranty for our products. This means that you receive the Solarlux quality you are used to throughout Germany – directly at your location.

The Solarlux quality promise – you can rely on us



Individual solutions

With Solarlux, nothing is off the shelf. We consider your wishes and take on projects where others might stop. Every project is handcrafted and custom-made, ensuring precise fit and complete weatherproofing – even under the most challenging structural conditions.



Trendy colours at no extra charge

Choose from the Solarlux color palette with 30 shades at no extra cost, available in silk matt or glossy finishes. A wide range of special paints and effect coatings is also available upon request.



Offer with visualisation

You'll receive a personalized offer complete with a photographic visualisation of your project directly on your home. Augmented reality representations are also available, allowing you to see exactly how your Solarlux project will look and harmonise with your house's architecture before making a decision.



Installation in one appointment

Our in-house assembly teams arrive on the scheduled date, completing installation efficiently and without interruptions. Naturally, the construction site is left spotless after final inspection.



Regular maintenance service

We provide regular maintenance and ensure the long-term durability of our products well beyond the statutory warranty. Premium care and cleaning products are also available to keep your Solarlux systems in top condition.



Colour match to existing structures

Have a special color request? We can also work with powders and varnishes from third-party manufacturers, ensuring perfect color consistency so your new Solarlux product seamlessly matches your windows or front door.

Digital Services

We offer you various forms of assistance in every planning phase – in digital form, but also directly and immediately through your contact person.



Digital bifold door advisor

Have you gained an initial overview and would now like to know more precisely which Solarlux system is right for you? Then use our digital click advisor: Simply comfortably at home on your own sofa, with answer a few questions on your iPad, mobile phone or computer and you will receive a beautifully designed, digital lookbook for further inspiration and viewing of our various bifold door systems.



Spaces

In the browser-independent reference database *Spaces* over 600 project documents are available online. Further links provide detailed project descriptions, information on the product family and the used components, products as well as technical information available.



