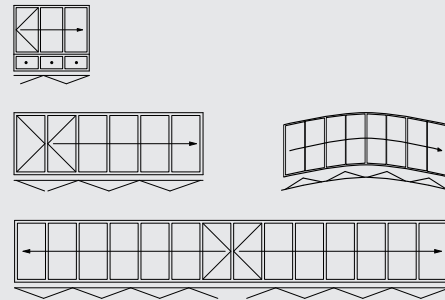


FLOOR TRACKS

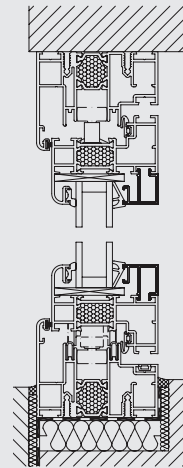


CONFIGURATION VARIANTS

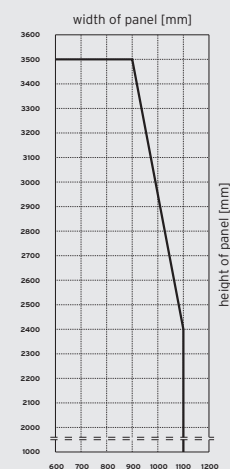


* on request

VERTICAL SECTION



PANEL SIZE CHART



VARIANTS

- Available as floor-mounted folding glass door
- Can be folded outwards, to the left and/or to the right

PROFILE SYSTEM

- 70 mm element thickness, 24 mm thermal break
- 80 mm frame thickness
- Slim panel and frame profiles (panel joint 157 mm)
- Solid multi-chamber profiles with corner connection (compressed and glued)
- Flush floor track without upstand for disabled access available

WINDOW/DOOR SYSTEM SL 80/81

- Complete window system to match the folding glass door is available: tilt and turn, parallel slide and tilt, fixed panels

FITTINGS

- No protruding runner and guide tracks
- Segmentation possible (bending on request)
- Open pair of panels can be rotated over 90 °
- Lockable in any partly open position
- Stainless steel handles and fittings are optional

GLAZING

- Heat-insulating glass as standard
- $U_g = 1,1 \text{ W/m}^2\text{K}$ with 2 x 4 mm float glass
- Triple glazing and other specialist glazing available
- Glass thicknesses from 20 to 38 mm available

U-VALUE

- $U_w = 1,4 \text{ W/m}^2\text{K}$ ($U_g = 0,7 \text{ W/m}^2\text{K}$) according to DIN EN ISO 10077 on the basis of a three-panel folding glass door, WxH 2700 x 2300 mm

SURFACE FINISH

- Powder coating to RAL
- Anodised aluminium to EURAS

MAXIMUM PANEL SIZES

- 900 x 3500 mm
- Panel weight up to 100 kg
- Glazing bars are necessary for system heights over 3000mm
- Special sizes on request

TESTED FOR

- Ventilation Class 3 to DIN EN 12 207
- Impermeability to rain Class 9A to DIN EN 12 208 (matches stress group C according to DIN 18 055)
- Resistance to wind Class C3/B3 to DIN EN 12210
- Airborne sound insulation till 45dB to DIN 52210
- Hurricane test up to a wind force of 300 km/h following American standards (optional)



56702-0-900 / 07/2011 / subject to technical changes

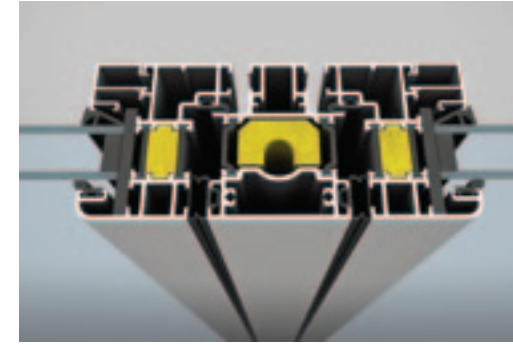


FOLDING GLASS DOOR
SL 70e



HEAT INSULATION

Solid multi-chamber profiles with thermal break webs and foam core offer the best heat insulation according to the latest energy conservation regulations (EnEV).



SAFE OPERATION

The swing panel (in the case of an odd number of panels) is locked by means of a special catch ensuring the door can be carried along safely.



SECURITY/COMFORT

Stainless steel design handle with integrated multi-point locking system and catch bolt, lock and profile cylinder ensure high security.



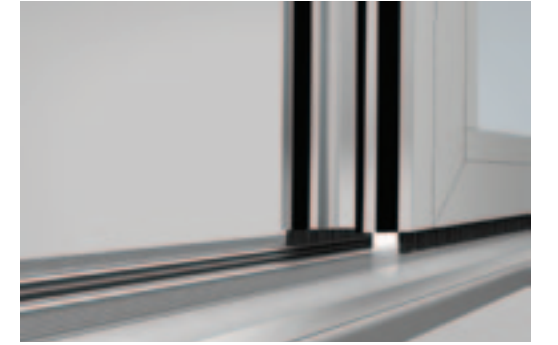
ENGINEERED

Long-lasting stainless steel runners and tracks ensure easy, quiet and smooth operation of the folding glass doors. Due to the position the runners are protected against dust and dirt.



STABILITY

Espagnolettes with 24 mm throw lock the panels into the top and bottom track of the frame ensuring they withstand gales and afford high security.



BARRIER FREE

A flush floor track is also available that ensures barrier free living with easy access through large openings.



WIDTH ADJUSTMENT

Small adjustments to the overall width can be made to compensate for dimensional tolerances. The strong hinge pins provide high security.



PANEL HEIGHT

Through innovative profile technology a maximum panel height of 3500 mm can be achieved. The folding glass door is therefore particularly suitable for shop entrances.

